



Biorepository and Tissue Technology Shared Resource (BTTSR)

INTRODUCING **NEW** SERVICES



Sharmeela Kaushal, Ph.D., Valeria Estrada, M.D., Thomas Beaumont, M.D., Alfredo Molinolo, M.D., Ph.D.

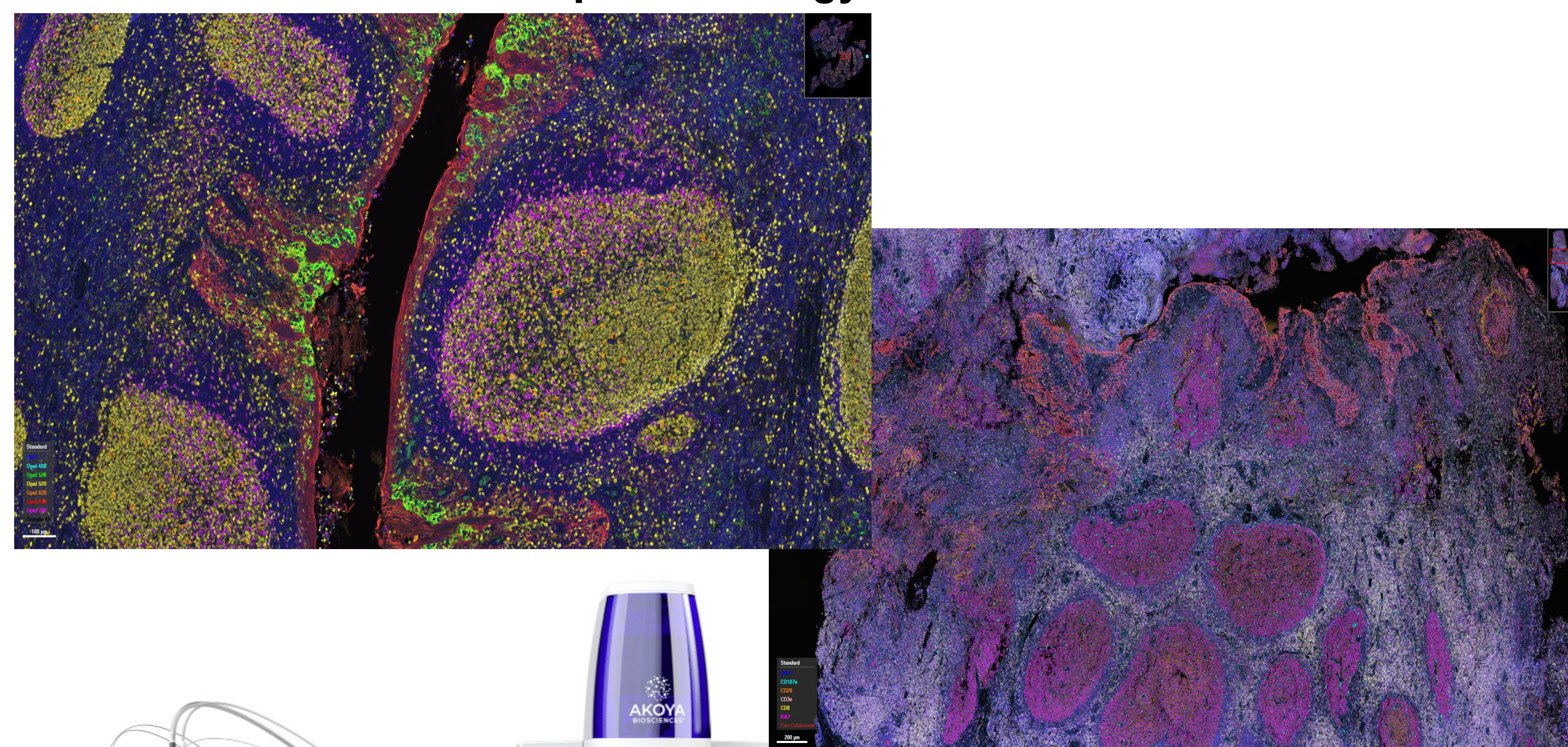
TISSUE TECHNOLOGY

NEW EQUIPMENT AVAILABLE

MULTIPLEXING SERVICES

PHENOCYCLER FUSION SYSTEM

Scale Your Discovery Studies with the Fastest Single-Cell
Spatial Biology Solution



FAST

Map a million cells in 10 minutes

ULTRAHIGH-PLEX

Analyze 100+ biomarkers from any samples type for deep spatial phenotyping

UNBIASED

Image whole slides rapidly and ensure no cell is left behind

HIGH-THROUGHPUT

Analyze 5 to 100+ slides per week

BIOREPOSITORY

NEW EQUIPMENT AVAILABLE

NUCLEIC ACID EXTRACTION AND QA SERVICES

QIACUBE CONNECT and AGILENT-4200 TAPESTATION

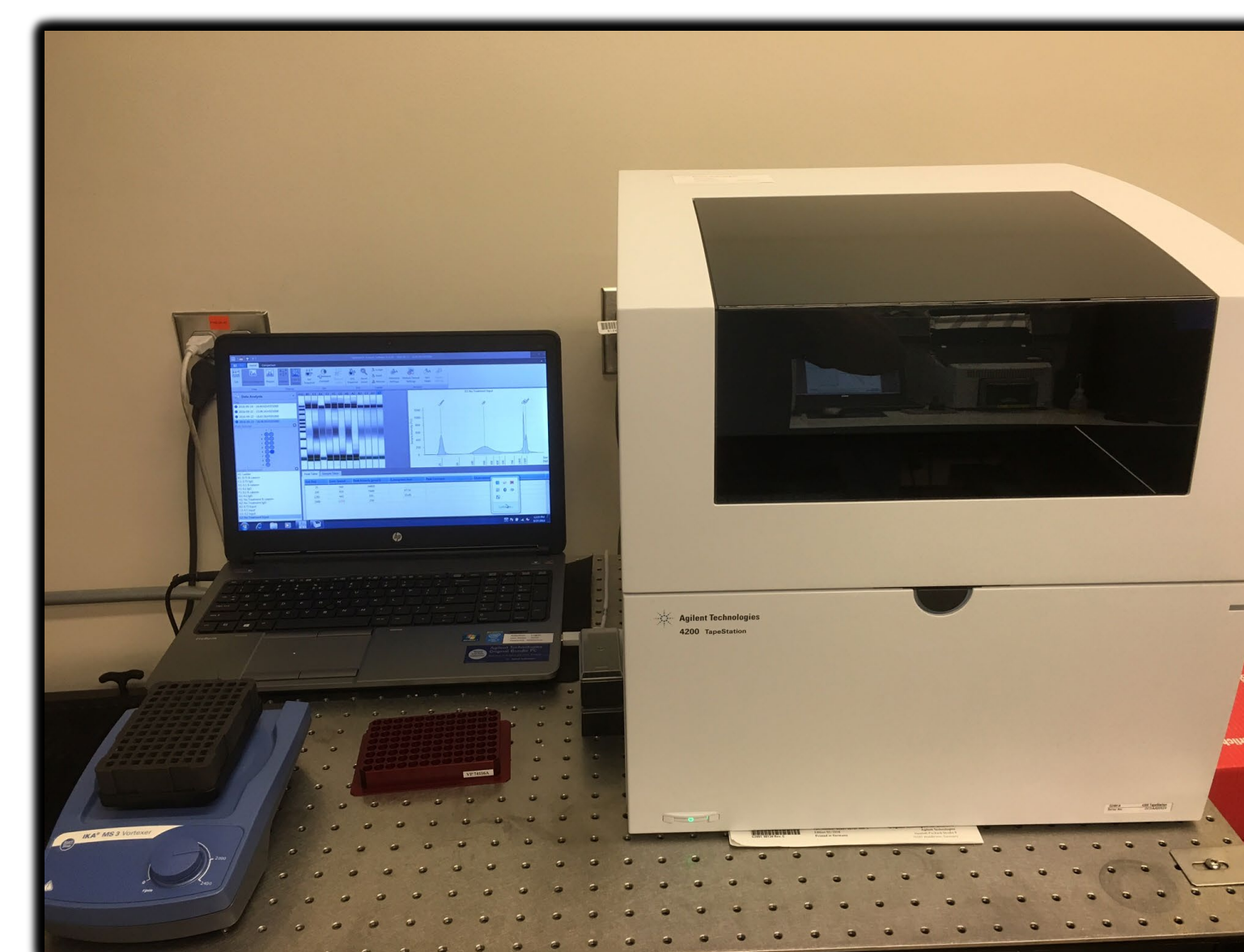
Pre-analytes standardized for downstream genomic assays

Qiacube Connect : Fully automated, spin column- based extraction



- ❖ Automates over 80 QIAGEN kits with over 140 standard protocols for DNA, RNA and protein sample processing
- ❖ Optional protocol customization expands the use to over 3000 protocols
- ❖ Get reproducible results with less hands-on time

Agilent Tapestation 4200: Automated electrophoresis solutions



Nucleic acids QC & QA for several assays including PCR, digital PCR, RT PCR, Whole genome sequencing, RNA-sequencing, next generation sequencing, single cell sequencing, and others