



Embracing life and possibilities for 20 years and counting!

An Affordable, All-Inclusive
Personal Care & Memory Care
Community



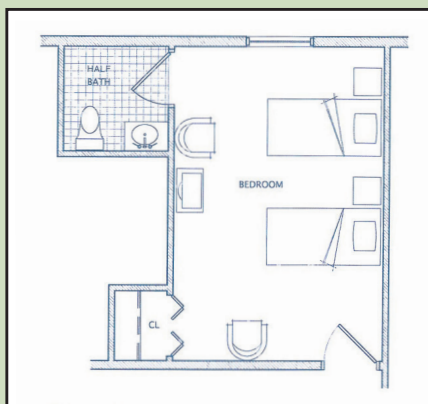
“My mother is a resident here and we are extremely happy with the care she receives. Beautiful surroundings and very caring people, top to bottom. They have many activities for the residents both inside and out of the facility. The holiday parties, Valentine’s Day, the annual pig roasting (was amazing!), Christmas and New Year’s Eve were awesome! Definitely a great place for a loved one that needs some extra special care.”

— Mary

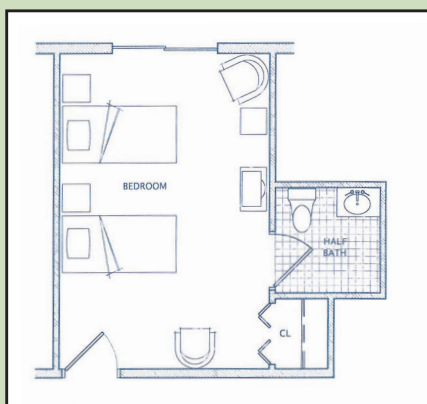
PERSONAL CARE

At Heritage Hill Senior Community, your loved one will find all the comforts, conveniences and services they’d expect – as well as any care or assistance that may be needed. The monthly rental includes assistance with daily living, medication management, meals, activities, housekeeping, transportation to medical appointments, and more!

PERSONAL CARE FLOOR PLANS



PRIVATE \$4,120/mo. or
COMPANION \$3,070/mo.
280 Square Feet



PRIVATE \$4,370/mo. or
COMPANION \$3,325/mo.
with COURTYARD ACCESS
280 Square Feet



ONE BEDROOM SUITE \$4,120/mo.
567 Square Feet

Rates Effective 1/1/2021

For more information or to schedule a tour contact
RACHAEL TIMM • rtimm@heritagehillsenior.com
or call Rachael at 570-427-4500



800 6th Street, Weatherly, PA 18255 • www.heritagehillsenior.com

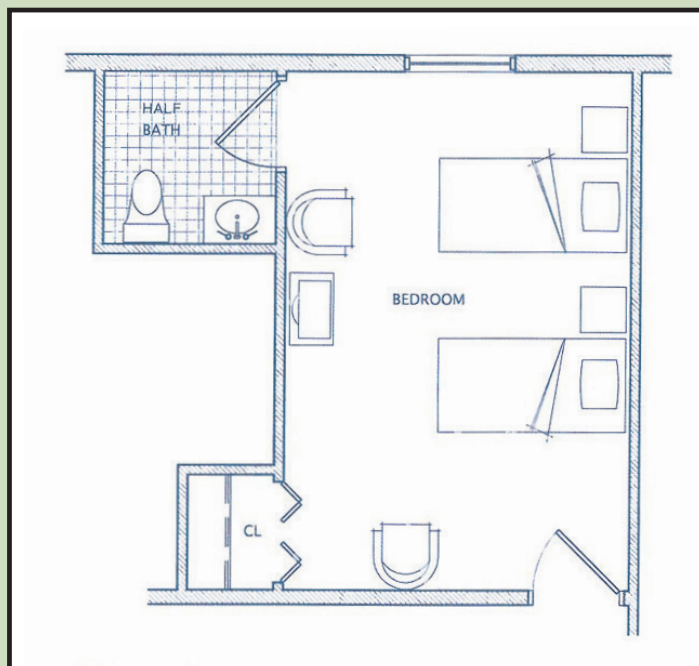


MEMORY CARE

Located within the community is Shepherd's Garden which is a secure neighborhood designed for those with memory-impairing illnesses such as Alzheimer's disease. Residents in this neighborhood receive all of the amenities of personal care along with specialized care and Daybreak program, which compassionately addresses their individual needs.

Heritage Hill Senior Community is making a huge impact on the quality of care for your loved one living with Alzheimer's disease or dementia by implementing Teepa Snow's Positive Approach® to Care model. This care approach recognizes the unique needs of each person by highlighting their skills, while providing support. A Positive Approach to Care and The GEMS®: Brain Change Model is the standard for all of our caregivers' interactions with residents.

MEMORY CARE FLOOR PLAN



PRIVATE \$4,925/mo. or COMPANION \$3,975/mo.
280 Square Feet

Rates Effective 1/1/2021



For more information or to schedule a tour contact
RACHAEL TIMM • rtimm@heritagehillsenior.com
or call Rachael at 570-427-4500



800 6th Street, Weatherly, PA 18255 • www.heritagehillsenior.com

IT'S LIKE DINING OUT, EVERY DAY!

Get a taste of Heritage Hill Senior Community with this sample menu!

BREAKFAST

- Choice of Juice
- Choice of Cold or Hot Cereal
- Egg with Sausage Patty on a Croissant
- Assorted Danish
- Milk, Coffee or Hot Tea

LUNCH

- Hawaiian Chicken
- Steamed White Rice
- California Vegetable Blend
- Dinner Roll
- Coconut Cream Pie
- Milk or Beverage of Choice
- Alternate Entrée: Butter Crumb Cod

DINNER

- Italian Wedding Soup
- Crispy Chicken Breast Sandwich
- Side Salad with Choice of Dressing
- Ice Cream Sundae
- Alternate Entrée: Tuna Salad Wrap

In the event you do not find anything appealing on the menu, an alternative menu is always available.

> Join us for a complimentary meal! Call Rachael or Jessica at 570-427-4500.

GET YOUR DAILY DOSE OF FUN!

Heritage Hill Senior Community puts focus on resident LIFE! Residents are encouraged to engage in programming created to maximize independence and continue enrichment. Check out these sample social activities.

PERSONAL CARE SAMPLE SOCIAL CALENDAR

- 9:00 Morning Greetings
- 9:30 Manicures w/Students
- 11:00 Pet Therapy Time
- 11:45 Neighborhood Walk
- 2:00 Resident Birthday Party
- 3:30 Crafty Crew Club
- 7:00 Movie Classics

- 9:00 Morning Greetings
- 10:00 Sit & Be Fit
- 11:00 This & That Trivia
- 11:00 China Buffet Trip
- 11:45 Neighborhood Walk
- 2:00 Hershey Kiss Bingo
- 4:00 Puzzle Pals Club
- 7:00 Movie Classics

- 9:00 Morning Greetings
- 10:00 Sit & Be Fit
- 11:00 Memory Triggers
- Crossword Puzzles
- 11:45 Neighborhood Walk
- 2:00 Special Busy Baker's Club
- 4:00 Movie Classics

MEMORY CARE SAMPLE SOCIAL CALENDAR

- 10:30 Morning Exercise
- 11:15 Daily Chronicle
- 1:30 Parachute
- 2:00 Ring Toss
- 2:30 Neighborhood Social
- 3:30 License Plate Design
- 4:30 Walk and Roll

- 10:30 Morning exercise
- 11:15 Daily Chronicle
- 1:30 Bowling
- 2:00 Bean Bag Twister
- 2:30 Neighborhood Social
- 3:30 Finish The Lyrics
- 4:00 Jeopardy

- 10:30 Morning Exercise
- 11:15 Daily Chronicle
- 1:30 Go Wild!
- 2:00 Ball Toss
- 2:30 Neighborhood Social
- 3:30 Color Me Calm
- 4:30 Dancing to Dinner

> Check out our upcoming activity calendar online!

TRANSPARENT FINANCIAL STRUCTURE

No buy-in fee, long-term leases or hidden costs

Monthly rental based on the size of the apartment you choose and includes utilities, meals, activities and wellness program, housekeeping, maintenance, laundry facilities, transportation to group outings, and parking.



For more information or to schedule a tour contact
RACHAEL TIMM • rtimm@heritagehillsenior.com
 or call Rachael at 570-427-4500



800 6th Street, Weatherly, PA 18255 • www.heritagehillsenior.com