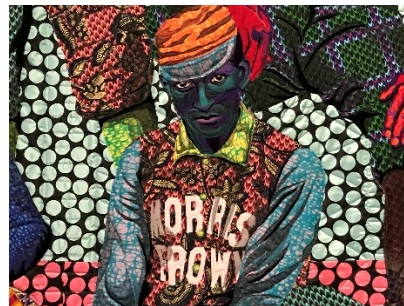




Greetings Fellow Artists!

Happy almost Spring! It is a time for new beginnings and maybe trying that different medium you have been thinking about. When I was juried into PSA, I worked in graphite almost exclusively. I drew life size and sometimes larger than life size still-life compositions. I gradually moved into watercolor then oil. Along the way I have also experimented with pastel. There is always something new to try. For me, it helps to hone my skills and rethink how to approach a painting from a different perspective, so to speak.

Around town. There was an exhibition at the Skirball Cultural Center recently that featured quilts from the Civil War Era to modern day. One present day quilt artist, Bisa Butler, made the most detailed and amazing quilts I have ever seen. Here are a few photos of her work. In my opinion, she paints with fabric and stitches.



Other exhibitions I hope to see are Paul Gauguin's "The Swineherd" on display at the Norton Simon Museum through November 2023. That should give most of us plenty of time to see it! Starting March 8th the Pasadena Museum of History will exhibit "Community Stitches: Quilt Design and Stories". At the Getty Center through April 7th is "Our Voices, Our Getty Reflecting on Drawings" which features rarely seen drawings from the Museum's collection. The Huntington Library has an exhibition on tempera painting through March 13th and, of all things, an exhibition of quilts, Gee's Bend – Shared Legacy through Sept. 2023. Having majored in art and art history, I'm a huge fan of museum exhibitions. As with trying a different medium now and again, the museum experience can open our eyes to new adventures in art.

Volunteering! As you will see in Larry Rodger's post, he is looking for a few good folks to assist with exhibitions. We are not expecting our members to devote all their spare time to PSA only a few hours once or twice a year to help keep things running smoothly. Most of the volunteer duties come with an explanation of the time commitment and detail of what is needed.

Again, please keep us posted through Member News about all the events or exhibitions you will be participating in. It is easy to submit your information through the PSA website. Some of our members are very good about keeping us informed. Member News is published every Monday.

Finally, the next New Member Screening is tentatively scheduled for Sunday April 16th at the Blinn House. More information is on the PSA website. Please encourage your artist friends to submit for membership.

All the best, see you in March,
Kathleen to some, Kathy to others