

August 16, 2021, Issue 769

DAN + SHAY

STEAL MY LOVE



#1 MOST ADDED! ADD NOW!

WFH Survey: Concerns Remain

Following last week's (8/9) look at how companies and stations are approaching a potential return to the office (read [here](#)), **Country Aircheck** conducted a survey gauging industrywide preferences and attitudes towards the ever-evolving work environment. The findings show employees are thriving in the new workspace, even as significant hesitancy remains regarding in-office work and event attendance.

Among the 400 respondents, 50.8% (203) identify as male and 38% (152) work within Radio Programming/Air Talent/Operations, followed by Records at 21% (84). Other categories include Artist Management (8.5%), Marketing/Promotion/Distribution (7.8%) and Publicity (4.8%). The majority of participants are mid-level (49.2%), followed closely by Executive/Senior (41.9%).

That's My Job: An overwhelming majority of respondents (73.4%) think they're getting the job done in the pandemic era. "Working in an environment I feel comfortable in increases my



(continued on page 8)



Link In Park: Warner/WAR's **Dan + Shay** celebrate No. 1 "Glad You Exist" after their show at Nashville's Centennial Park Friday (8/13). Pictured (l-r) are the label's **James Marsh, Taylor Niemi, Kimmie Trosdahl** and **John Esposito**, the duo's **Dan Smyers** and **Shay Mooney** and the label's **Tom Martens, Jessica Rouse** and **Michael Chase**.

Tour Launch: Thomas Rhett

Valory's **Thomas Rhett** kicked off *The Center Point Road Tour* with **Rhett Akins** and **Gabby Barrett** by staging back-to-back nights in Orange Beach, AL Aug. 13 and 14. ADX **WYCT/Pensacola** PD/morning host **Brent Lane**, Cumulus **WXBW/Pensacola** APD/afternoon personality **Matt Fisher**



TEQUILA LITTLE TIME

JON PARDI

CA/MB 17*
+473X

BB/BDS 22*
+1.2 MILLION AUDIENCE

"Like most Pardi songs, first you play it, then the research builds, then it never goes away. It looks like 'Tequila Little Time' is right on course."

— Mike Preston (PD),
KPLX and
KSCS Dallas

"Holy crap! The metrics!!! HIT!"

— Casey Carter (PD),
WNOE New Orleans

"Researching like a Power! Being an early believer is paying off!"

— Ashley Wilson (PD),
WAMZ Louisville/
WBUL Lexington

"'Tequila Little Time' has been a consistent tester for KKBQ from day one and has never researched below medium!"

— Johnny Chiang
(PD), KKBQ Houston

"Jon Pardi has another huge hit! It's a summer sing-along from a fast rising star."

— Brent Michael (PD),
KUZZ Bakersfield

**CONVERT
THIS
HIT
NOW!**

OFF THE RECORD

An Off The Record conversation with Valory's **Kidd G**:

I made "Summer In A Small Town" to show the world where I'm from — where any kid from a small town is from — and what we do when the rest of the world claims there's nothing to do out here. We make the best of what we have in our small town.

The amount of music I was making when there was nothing else to do during the lockdown is going to keep me motivated to keep making that much music moving forward.

My TikTok presence has really helped me grow my fanbase and listeners. When I first teased "Dirt Road" on TikTok, it gained so much buzz that I released it on all platforms, and it went crazy from there.

My parents always had Kissin' 99.3 FM [WKCN/Columbus, GA] on when I was growing up.

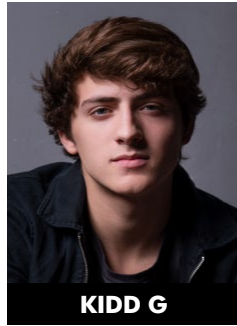
The first time I heard the finished version of "Summer In A Small Town," I was a bit iffy on how it came out, but when Jacob Rice put his mix on it, it instantly became one of my favorites. And when the video dropped, it really brought it all together.

If I could have written a song that is out already, it would be "I Wish Grandpas Never Died" by Riley Green. I can relate to that song, and I have my own way of portraying something like this on my upcoming project.

My favorite song on the radio — any format — is Justin Moore's "We Didn't Have Much." He's one of my favorite country singers of all time. I also really like "RapStar" by Polo G. I still love my hip-hop.

I'm most excited to visit Atlanta on my *Down Home Boy Tour*. It's going to be a homecoming for me, and I'm so excited! We already sold out the first date and are on the way to selling out the second. I also hear Minnesota has the best fans, so I'm excited for that.

I'm currently bingeing *The Umbrella Academy* on Netflix.



KIDD G

and iHeartMedia **WKSJ/Mobile, AL** afternoon co-host **Shelby Mitchell** were all present at The Wharf Amphitheater for opening night and tell **Country Aircheck** what stations can expect when TR arrives in the market.

Mitchell explains Rhett's set included a center aisle catwalk and large video screens on each side of the stage. Lane says it was "nice not having an LED screen behind the stage, as it helped focus the attention on the artists." Each of the attendees noted the set's extraordinary lighting rigs and coordination with the music being performed.

Following the opening sets, which included a costume change from Barrett, Rhett took the stage. "There was total darkness, then dark blue lights," describes Mitchell. "Slow drums progressed to bright lights on the stage and background, then all of the lights synced with the drums and TR stepped out in the middle of a fog-filled stage." His opening number was "Crash And Burn," and "the crowd went wild," according to Lane. Fisher adds, "TR came down the steps off a center riser, and the show was off and running."

Of the approximately 20 songs, Rhett only performed one that has yet to hit Country radio — "Redneck Be Like" — and rolled through his biggest hits before wrapping with "Die A Happy Man," "Unforgettable" and "T-Shirt." Of note was a full-circle moment with "Remember You Young." "TR introduced that song on The Wharf stage in 2019, so he told the story and spent some time talking about his growing family," explains Lane. "He also did a fourth verse to 'Sixteen,' saying he wrote that song when he was 25, but now that he's 31, he needed to add a verse."

The production didn't rely on costume changes, B-stages or moving set pieces, but all noted Rhett's interaction with the audience as a key to the energy exchanged. "TR traded his blue Miller Lite ballcap for a white and blue trucker-style PBR cap from someone in the audience early on," says Mitchell. Fisher pointed to sing-along moments as his favorite, including "Vacation" and a stripped-down acoustic version of "Country Again." "As one would expect, though, 'Die A Happy Man' was the big hit of the night," surmises Fisher.



Brent Lane



Matt Fisher



Shelby Mitchell

©2021 Country Aircheck™ — All rights reserved. Sign up free at www.countryaircheck.com. Send news to news@countryaircheck.com

**TRUTH
ABOUT YOU**
MITCHELL TENPENNY
#2 MOST ADDED
10M+ STREAMS IN THE FIRST 4 WEEKS
THANK YOU COUNTRY RADIO
LISTEN HERE

THE FIRST COUNTRY ALBUM IN THE STREAMING ERA
TO BE RIAA CERTIFIED GOLD UPON RELEASE

GOOD THINGS

DAN + SHAY



NEW ALBUM
AVAILABLE NOW

glad you exist 9TH CAREER #1 SINGLE AT COUNTRY RADIO

STEAL MY LOVE

#1 MOST ADDED! ADD NOW!




"DREW PARKER IS THE SAFEST BET ON A NEW COUNTRY ARTIST AT COUNTRY RADIO. IT IS A NO-LOSE SITUATION" *MIKE MOORE, WKHX/ATLANTA*

"DREW IS 'REAL', TALENTED AND A GREAT WRITER WHO CERTAINLY DESERVES TO BE HEARD!...HE CONNECTS AND IT'S REAL." *MIKE KENNEDY, WDAF/KANSAS CITY*

"'WHILE YOU'RE GONE' WAS A ONE LISTEN FOR ME...IT'S THE RIGHT AMOUNT OF TRADITIONAL SOUND MIXED WITH CURRENT SOUND THAT WE LEAN INTO." *NICK RUSSO, KILT/HOUSTON*

"IF YOU WANT A STRAIGHT AHEAD COUNTRY SONG TO BALANCE OUT YOUR PLAYLIST, THIS IS YOUR TUNE." *KEVIN CHRISTOPHER, KJKE/OKLAHOMA CITY*



DREW PARKER WHILE YOU'RE GONE

ON TOUR WITH LUKE COMBS
3 WEEK #1 WITH "FOREVER AFTER ALL"
OPRY DEBUT ON 9/14



As for pandemic-related protocols, Mitchell says "The Wharf strongly encourages people to wear masks and socially distance, but also states everyone is responsible for evaluating their own risks." Lane shares there were "no meet and greets, but it was a full show, and TR regularly high-fived the crowd."

The three concur that it was an excellent opening to a tour that will later include **Cole Swindell**, as well. "It made me feel good to see people enjoying live music again," explains Mitchell. Lane adds, "I have never been disappointed by a TR show, and he continues to be a showman." Reach Lane [here](#), Fisher [here](#) and Mitchell [here](#). See a complete list of upcoming dates [here](#).

—Monta Vaden

Tour Launch: Dierks Bentley

Capitol's **Dierks Bentley** kicked off his *Beers On Me Tour* this weekend with stops at Salt Lake City's Usana Amphitheater on Friday (8/13) and Boise, ID's Ford Idaho Center Amphitheater on Saturday (8/14). **KSOP/Salt Lake City PD**/morning host **Deb Turpin** and Cumulus **KIZN/Boise PD**/morning host **Chris Matthews** were at the shows and shared their experiences with **Country Aircheck**.

MCA's **Parker McCollum** and BMLGR's **Riley Green** are the tour's openers.

"This was my first time spending any time with [McCollum] and man was he impressive," says Matthews. "He already has such a comfortable stage presence and I loved watching him interact with the crowd."

"They were really good, and both joined [Dierks] onstage during his set," adds Turpin. "He sounded so good, and the band was tight." Bentley kicked off his set with his last single, "Gone," and then went into one of his biggest hits, "Free And Easy (Down The Road I Go.)"

"He has some very cool full-length screens and the video for each song was amazing," describes Turpin. "His light rig was one I don't think I've seen before. The arms radiate wider as they go out to the edge of the stage." Bentley kept up the tempo as he went through his catalog with hits like "Am I The Only One" and



Dierks Bentley
and Deb Turpin



Chris Matthews

"Burning Man." As Turpin says, it was "high energy." Matthews concurs, "He sounded great, and his energy was electric."

In addition to bringing McCollum and Green out during his set, Turpin says, "Dierks was so good with the crowd, you could tell he was happy to be playing again." Matthews adds, "Speaking of the crowd - they were amped up. It was a hot, smoky day, but that didn't stop [them] from coming out early to loudly cheer and sing."

Of course, any true Bentley fan knows that there is more to come after his encore, and this tour is no exception. "**Hot Country Knights** ended the night with a rousing, hilarious string of '90s hits," says Turpin, which included nods to Travis Tritt, Sawyer Brown and John Michael Montgomery. Reach Matthews [here](#), and Turpin [here](#); see a complete list of upcoming dates [here](#).

—Chris Huff

Chart Chat

Congratulations to **Dan + Shay, Kristen Williams, Tom Martens, Michael Chase** and the **Warner/WAR** promotion team on landing this week's No. 1 song, "Glad You Exist." This is the duo's ninth chart-topper. Songwriters are **Tayla Parx, Ryan Lewis, Jordan Reynolds, Dan Smyers** and **Shay Mooney**.



Dan + Shay

This week's No. 1 is made even more extraordinary as Dan + Shay also have today's Most Added song with 72 adds for "Steal My Love." This is only the second time in **Country Aircheck** history an artist has claimed both titles in the same week. The previous occurrence took place in May 2011 ([CAW 5/31/11](#)) when **Brad Paisley** hit No. 1 with "Old Alabama" and was Most Added with his duet with Carrie Underwood, "Remind Me."

News & Notes

Big Machine's **Midland** will launch their *Set It Straight: Myths And Legends* podcast on **Amazon Music** Aug. 25 with a season premiere episode featuring Pearl's **Garth Brooks**. Listen to the trailer [here](#).

SiriusXM and **Pandora** will host the *Small Stages Series* beginning Aug. 19 with live shows from secret locations. Performers slated include **Kane Brown, Kenny Chesney** and **Brandi Carlile**. Details [here](#).

EMI Nashville's Brothers Osborne have been named the 2021 Ambassadors for **Habitat For Humanity Of Greater**

©2021 Country Aircheck™ — All rights reserved. Sign up free at www.countryaircheck.com. Send news to news@countryaircheck.com

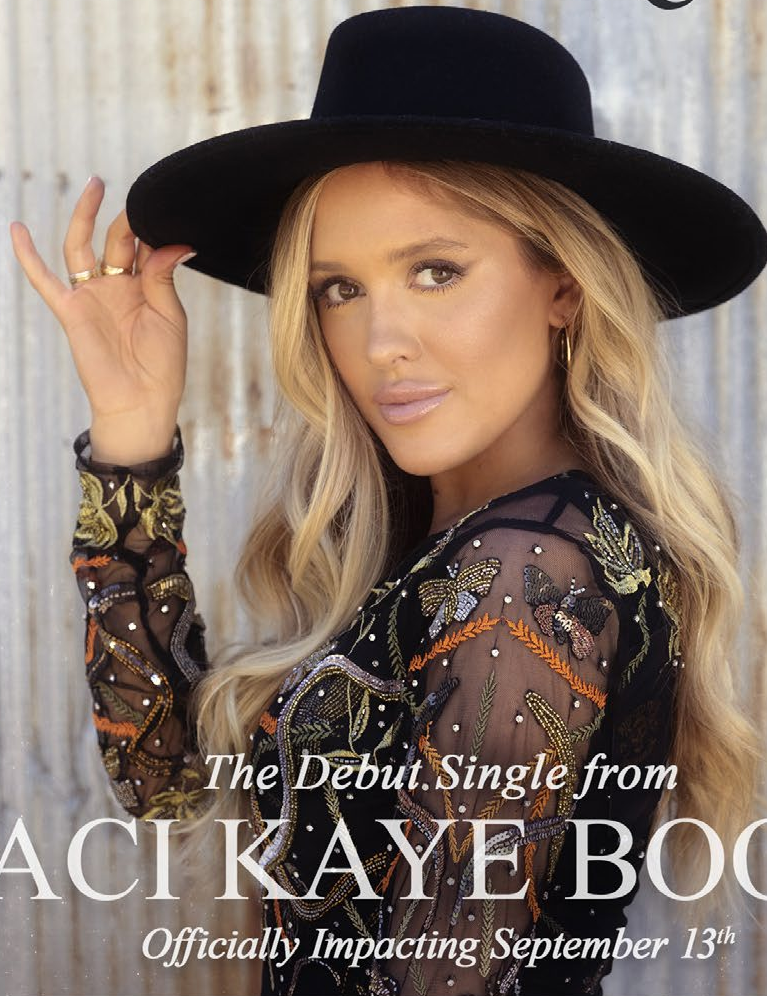
ELVIE SHANE
"MY BOY"

TOP TEN
(and we're not done yet)!

71 Million On-Demand Streams and counting

BBR
BMG

TREASURE



The Debut Single from
LACI KAYE BOOTH

Officially Impacting September 13th

THE COLLECTION

Available Everywhere Hit Music is Consumed



1. "Used To You" *Written by Laci Kaye Booth, Sam Ellis, Sara Haze*
2. "On The Fence" *Written by Laci Kaye Booth, Todd Clark, Sara Haze, Jason Cole Saenz*
3. "Treasure" *Written by Laci Kaye Booth, Jessie Jo Dillon, Jimmy Robbins, Laura Veltz*
4. "Broken Heart Still Beats" *featuring Charles Kelley*
Written by Laci Kaye Booth, Charles Kelley, Paul DiGiovanni, Adam Hambrick
5. "Shuffle" *Written by Laci Kaye Booth, Sam Ellis, Derrick Southerland*
6. "If He Would've Stayed" *Written by Laci Kaye Booth, Carlo Colasacco, James Slater*
7. "Visions" *Written by Laci Kaye Booth, Jamie Kenney*
8. "Heart Of Texas" *Written by Laci Kaye Booth, Nathan Chapman, Emily Fox Landis*

Thank you to all the believers!





Kidd G
Summer In A Small Town
IMPACTING NOW!
LISTEN HERE

AS AN ARTIST
CLOSING IN ON
200,000,000
ON-DEMAND STREAMS

SUMMER IN A SMALL TOWN
2,000,000+
ON-DEMAND STREAMS
IN JUST OVER A MONTH



Nashville's Music Row Build scheduled for Oct. 2-3. **TJ** and **John Osborne** will swing hammers and help volunteers construct Habitat's first townhome community.

Tennessee **Governor Bill Lee** has declared Aug. 18, 2021 as **Charlie Daniels Day** across the state in conjunction with the 2021 Volunteer Jam: A Musical Salute To Charlie Daniels taking place Aug. 18 at 7pm CT at Nashville's Bridgestone Arena.

BMLGR's Brett Young will release his debut children's book, *Love You, Little Lady*, Aug. 24 via Tommy Nelson, an imprint of HarperCollins. Pre-order an autographed copy Aug. 17 at 6pm ET via **TalkShopLive** [here](#).

The **RAB** will offer a webinar, "Radio Works For Retail/Seasonal Buying," Aug. 18 at 12pm CT. Register [here](#).

DLC Media is selling Classic Country **WVIG/Terre Haute** to **Educational Media Foundation** and will move the Classic Country form to **WZJK**, which has been airing Adult Hits "105.5 Jack FM."

Forever is selling the **Wheeling, WV** cluster, which includes Country **WBGI** & Classic Country **WLIE**, to **Morning Star Media** for \$885,000.

LKCM Radio **KTFW/Fort Worth** has added JPRMultimedia's **Jeremy Robinson** to 7pm to midnight. Stream [here](#).

WFH Survey: Concerns Remain

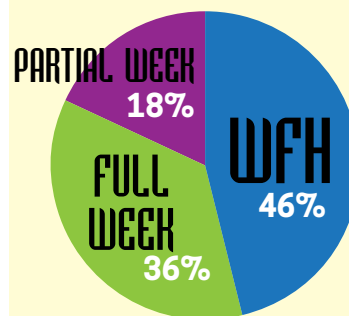
(continued from page 1)

creativity and productivity," says one WFH enthusiast, citing no commute as a less-stress-and-more-time bonus. When asked where they feel most productive, 39.2% (156) reply "from home" and 34.2% (136) conclude their location doesn't affect productivity. Only 26.6% are of the opinion they work best in an office setting.

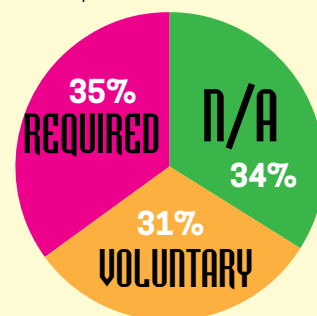
Specific to on-air work, several mention quality as a reason for preferring the office. "The 'jock from home' setups sound awful," one comments. "In an era where we're hemorrhaging listeners, everything needs to be of the highest quality that goes over the air." Alternatively, one reader asserts they have better audio equipment and computers at home than in the studio, saying, "I'd rather be at home working than struggling with outdated technology." Another maintains their station's ratings are "the highest they have ever been with the smallest staff we've ever had working in an at-home or hybrid situation."

Among all respondents, only 18% (72) are currently working a hybrid schedule, but 50.9% would like to in the future. "I'm more productive working from home, but I'm more creative working in the office with my colleagues," surmises one. On the other hand, some point out the negative aspects of hybrid and

1. What is your company's in-office status?



2. If you are in-office for any portion of the week is that...



CAITLYN SMITH

THANK YOU GEORGE STRAIT FOR LETTING ME SHARE THE STAGE WITH YOU
THIS WEEKEND. I AM FOREVER GRATEFUL...CAN'T WAIT TO DO IT AGAIN SOON!

- 

"I've been a fan of Caitlyn's
for years...by far, the **best kept
secret in Nashville**. After seeing her
live this weekend, there is no
doubt, SHE IS A STAR! Time for
this secret to be known!"

- **Todd Nixon (KBEQ)**

"Caitlyn Smith is a bonafide superstar!
With a voice and range that blows you
away, **you can't help but champion
her true talent.**"

- **Sarah Weaver (WKML)**

"Caitlyn's the real deal.

Her vocal range will give you
goosebumps, while her songwriting
rivals anyone in the industry."

- **Nick Rivers (WIRK)**

"Caitlyn Smith is **country music's
next superstar**. Amazing vocals and
a commanding stage presence
She is the real deal."

- **Jeff Lynn (WQMX)**

I CAN'T

(feat. Old Dominion)

40* MB/CA



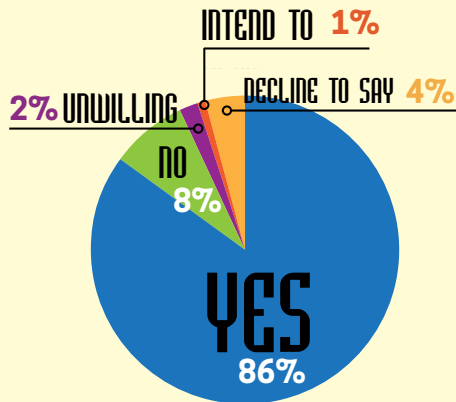
Kelly Clarkson ✓
@kellyclarkson

Just heard @caitlynsmith open for
George Strait tonight and damn she
can sing! Y'all have to check her out!

10:52 PM · 8/13/21 · [Twitter for iPhone](#)



3. Are you vaccinated?



WFH models, including the loss of a healthy work/life balance. "You never really 'clock out' when your home office is your kitchen island," says one respondent. One size does not fit all, according to one reader who believes, "Each market manager should have the final decision on what is the best

leading up to their first in-person event by saying, "I was one of the few wearing masks, but thankfully not immersed in the audience."

Broken down by gender, 44.8% of men say they are "very comfortable" returning to the office vs. only 24.6% of women, and 32% of men and 18.2% of women say the same of attending industry events and shows. When asked where they feel "more productive," 75.4% of women choose either at home or their location didn't affect productivity. In contrast, 32.5% of men designate the office as where they feel most productive.

As illustrated by last week's discussion with decision makers, the rapidly spreading strain has many executives rethinking, delaying or discarding return-to-the-office and hybrid plans. With many employees now comfortable working from home — and having shown equal-to-or-higher productivity levels — tolerance, flexibility and understanding may be useful when approaching a return to "precedented times." "There are no clear-cut solutions and finish line at this point," one commenter says. "So just rolling with it and pivoting gets us down the road." Another summarizes, "This is a new era, and we need to take advantage of the things we've learned during this last incredibly hard year. It's more that just learning we can still do our jobs outside of the office; it's understanding more about our mental health, our physical health, our personal health and professional health, and how we can continue to excel in each of those by living a more well-rounded life."

—Caitlin DeForest **CAC**

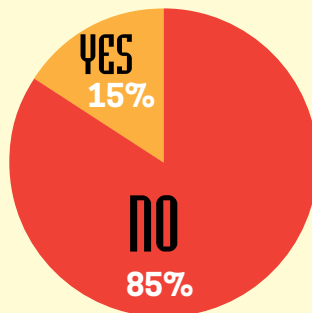
for their employees. Too many times decisions are made from out-of-touch management."

Broken out by industry segment, 48% of radio respondents are very comfortable and 36% are slightly comfortable with in-office work. By contrast, among respondents who work for record companies, only 23% are very comfortable and 31% are slightly comfortable. Labels lead radio 20% to 5% in being very uncomfortable with working in the office.

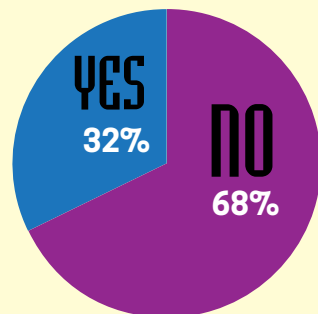
That's My Job: Vaccinations and trust factored into the hybrid and WFH model preference, with 31.8% saying they are slightly-to-very uncomfortable working in an office setting. "Our GM claims health is the top priority, yet routinely tries to keep employees in the dark when someone tested COVID-positive," one commenter bemoans. Companies requiring vaccination for in-office work — as Cumulus recently announced (CAT 8/12) — are in the minority as 84.6% of respondents report their companies are not requiring one. Alternatively, 85.7% of survey takers have been vaccinated and only 2% are unwilling to receive the shot(s). One participant shares their wariness regarding co-workers, explaining, "People cannot be trusted where vaccinations are concerned. It is required in our building, but several are not, and it's the same ones not wearing masks in the halls." Another adds, "What's most stressful about where we are now is the idea not everyone's working on the same ethical compass."

Despite the return of touring, when asked if they are currently traveling for work, 68.2% respond no. Relatedly, 34.6% feel somewhat comfortable and 27.8% slightly uncomfortable attending industry events and shows. One respondent describes the anxiety they experienced

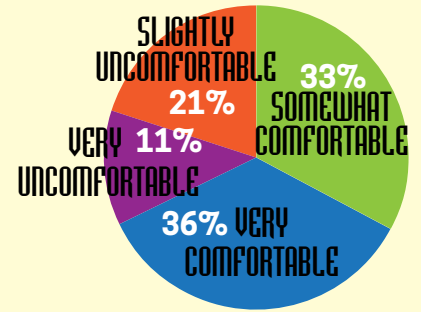
4. Does your company require vaccination?



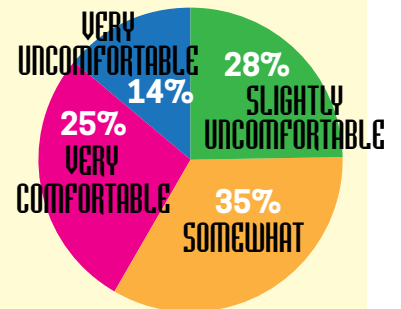
5. Are you currently traveling for work?



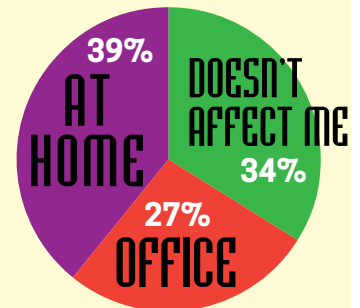
6. How comfortable are you with working in an office setting?



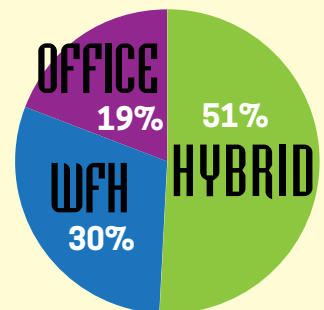
7. How comfortable are you with attending industry events and shows?



8. You feel more productive working ...



9. If given the option to set your own schedule for the foreseeable future, you would choose...



AVAILABLE JOBS**MIDWEST**

Summit **KFDI/Wichita** OM **Justin Case** is searching for a morning co-host. See the complete posting [here](#); send résumés and airchecks to Case [here](#).

Steel City **KBEQ/Kansas City** PD **Todd Nixon** is seeking an afternoon personality to succeed **TJ McEntire**. Send résumés and airchecks to him [here](#).

Midwest **WNCY/Appleton-Oshkosh, WI** Brand Mgr. **Dan Stone** is searching for a midday personality. Send résumés, references and airchecks to him [here](#).

Alpha **KZEN/Columbus, NE** Dir./Content **David Gustafson** is looking for a morning host. See the complete job description and apply [here](#); reach Gustafson [here](#).

Titan **KBKB/Burlington, IA** PD **Wyatt Reed** is searching for an afternoon personality. Send résumés and airchecks [here](#).

Midwest/**Peoria, IL** VP/MM **Mike Wild** is looking to add an OM for the cluster that includes Country **WXCL**. See the complete job description [here](#); send résumés, cover letters and airchecks to Wild [here](#).

Hubbard **KKWS/Wadena, MN** GM **Matt Senne** is searching for a PD/morning host. See the complete job description [here](#); send résumés and airchecks to Senne [here](#).

Cumulus **WDRQ/Detroit** Dir./FM Programming **David Corey** is seeking an afternoon personality. Send résumés and airchecks to him [here](#).

Townsquare **KOEL/Waterloo, IA** Dir./Content **Johnny Marks** is searching for a Brand Mgr./morning host. See the complete job description and apply [here](#); send résumés and airchecks to Marks [here](#).

White River **WKKG/Columbus, IN** Coord./Programming **Brad Jackson** is seeking a PD/morning host. Send résumés and airchecks to him [here](#).

Zimmer **KATI/Jefferson City, MO** OM **Jeremy Washington** is looking for a PD/morning co-host. Send résumés, social media samples and airchecks to him [here](#).

Audacy/**Minneapolis** is searching for an SVP/MM for the cluster that includes **KMNB** to succeed **Shannon Knoepke**. Apply [here](#).

NORTHEAST

iHeartMedia/**Washington, DC** RSVP **Jeff Kapugi** is looking for a Cluster APD to add to the programming team. Oversight includes Country **WMZQ**. Apply [here](#).

Forever **WOGI/Pittsburgh** is seeking a PD/on-air talent with three-to-five years of experience. See the complete job description [here](#); send résumés and airchecks [here](#).

iHeartMedia EVP/Country Programming Strategy **Rod Phillips** is searching for a PD/on-air talent to join **WPGB/Pittsburgh**. Send résumés and airchecks to him [here](#); complete job description and application [here](#).

SOUTHEAST

ADX **WYCT/Pensacola** OM **Kevin King** is searching for a **WYCT/Pensacola** morning co-host to succeed **Candy Cullerton** who will serve alongside PD/morning host **Brent Lane**. Must be knowledgeable in digital content creation and be active on a variety of social media outlets. Apply [here](#); reaching King [here](#).

Golden Isle/**Brunswick, GA** Dir./Programming **Mark "The Shark" Ediss** is seeking a successor for outgoing OM/PD/on-air talent Paul Andresen. The cluster includes Country **WRJY**.

Duties will include on-air, production, promotions, sales and handling technical issues. Send résumés and airchecks to Ediss [here](#).

Curtis **WQDR/Raleigh** PD **Mike Biddle** is looking for a morning co-host to succeed **Janie Carothers** and join incumbent **Mike Wheless** for *The Q Morning Crew*. Three or more years of experience is required. See the complete posting [here](#); send résumés, production samples, social media links, references and airchecks to Biddle [here](#).

Summit/**Louisville** OM **Cagle** is seeking a full-time midday personality with at least two years of on-air experience; PPM experience is a plus. Candidate should have an engaging presence, strong social media and tech skills, production and digital editing chops and the ability to communicate in an authentic way. Send résumés and airchecks to Cagle [here](#).

Stephens/**Alexandria, LA** OM/PD **Scott Mills** is looking for a full-time Dir./Production and on-air talent to join the cluster that includes Country **KLAA** & Classic Country **KBKK**. Send résumés and airchecks to Mills [here](#).

iHeartMedia/**Virginia-Carolina** Region SVPP **Kix Layton** is searching for a morning co-host to join **WKSF/Asheville, NC** morning man **Eddie Foxx**. Candidates must have three-plus years of experience and be proficient in social media, show prep, on-air production, client endorsements and public appearances. Send résumés and airchecks to Layton [here](#).

Summit SVP/Programming **Randy Chase** is seeking an OM/PD for the **Knoxville** cluster, including Country **WCYQ**, to succeed **Kevin "Gravy" Canup**. Candidates should have on-air and programming chops and be able to communicate effectively with both staff and leadership. Send résumés and airchecks [here](#).

Hall VP/Programming & Country **WPCV/Lakeland, FL** OM/PD **Bob Walker** is looking for a locally based full-time on-air personality and part-time/weekend/fill-in personalities. Send résumés, cover letters and airchecks to him [here](#).

Mel Wheeler **WSLC/Roanoke, VA** Dir./HR **Cheryl Skinner** is seeking a midday personality. Send résumés and airchecks to her [here](#).

iHeartMedia/**Nashville** is looking for a Dir./Promotions for the five-station cluster that includes Country **WSIX**. Apply [here](#).

Triangle Marketing Associates/**Smithfield, NC** GM **Rick Heilmann** is searching for an OM/PD/morning host for Country **WKJO**. See the complete job description [here](#); send résumés and airchecks [here](#).

SOUTHWEST

Townsquare **KQBR/Lubbock, TX** Brand Mgr. **Lance Ballance** is seeking an APD/on-air personality to succeed **Jan Miller**. Send résumés and airchecks to him [here](#).

Brazos Valley **KORA/Bryan-College Station, TX** VP/GM **John Seigler** is searching for an MD/morning co-host with an understanding of Texas country. Send résumés and airchecks to him [here](#). **Alpha/Amarillo, TX** is seeking a Market Mgr. for the cluster that includes Country **KGNC**. See the complete job description and apply [here](#).

Cumulus VP/Country **Charlie Cook** is looking for a PD/midday personality for **KAYD/Beaumont, TX**. See the complete job description and apply [here](#).

WEST COAST

Frontier/**Juneau, AK** GM **Cherie Curry** is seeking an OM/PD/on-air talent for the cluster

that includes Country **KTKU**. Send résumés with references and an aircheck to Curry [here](#).

Beasley/**Las Vegas** VP/MM **Peter Burton** is searching for **Cat Thomas'** successor to handle OM & Urban AC **KOAS** PD duties. Details [here](#); send cover letters and résumés to Burton [here](#).

Cumulus **KBUL/Reno, NV** PD/morning host **Bob Richards** is seeking a full-time morning co-host to join *The Moo Crew*. Complete job description [here](#); send résumés and airchecks to Richards [here](#). Marker **KPLM/Palm Springs, CA** PD **Kory James** is looking for an afternoon personality. Send résumés and airchecks to him [here](#).

Momentum **KJUG/Visalia, CA** PD **Rik McNeil** is searching for a morning show with three-to-five years of experience. See the complete job description and apply [here](#); submit résumés, social media profiles, mobile content, examples of how you have executed winning strategies to move morning ratings forward and an aircheck to McNeil [here](#).

Leighton **KYCK/Grand Forks, ND** OM **Jarrold Thomas** is seeking a station PD and morning team. Send résumés and airchecks to him [here](#).

KSOP Country **KSOP/Salt Lake City** PD **Deb Turpin** is looking for an experienced Dir./Promotions with on-air skills for nights. Apply [here](#). **Alpha/Portland** is searching for a full-time Dir./Marketing for the cluster that includes Country **KUPL**. Apply [here](#).

Beasley/**Las Vegas** VP/MM **Peter Burton** is seeking a full-time Dir./Promotions for the cluster that includes Country **KCYE**. Send cover letters and résumés to him [here](#).

Cumulus **KATM/Modesto, CA** PD **Andy Winford** is looking for a third-mic morning co-host to join **DJ Walker** and **Jaimee Lee**. See complete job description and apply [here](#).

OTHER

Townsquare Country Format Lead **Doug Montgomery** has immediate openings for PDs and morning talent. Send résumés and airchecks to him [here](#).

iHeartMedia EVP/Country Programming Strategy **Rod Phillips** has current openings for "great PDs in various size markets." Send résumés and airchecks to him [here](#).

River House Artists is looking to add a Dir./Promotion with five-to-10 years of experience who is willing to travel and has a background in radio promotion within a record company environment. Send résumés to Exec. Asst. **Callie Waterman** [here](#).

Audacy VP/Promotions & Experiences **Josh Pearlman** is continuing to build out the central and regional promotions teams and is now hiring for *Mgr./Midwest Regional Promotion* based in Chicago and working with Country **WUSN**, *Mgr./Central Regional Promotion* working with Country **WDAF/Kansas City**, two *Lead Dirs./Southern Regional Promotion* based in Atlanta and working with **WLFP/Memphis**, one *Dir./Southern Regional Promotion* working with **WLFP**, a *Mgr./TexasNola Regional Promotion* working with **KILT/Houston** and a *Project Mgr./Sponsor Strategy* working as part of the central team. Contact Pearlman [here](#) with questions.

SEEKING JOBS

•Cactus Jack

Former Entercom/Phoenix Dir./Production
GoGoJack@msn.com
 602-430-5908

•Tony Kelly

Former WUSN/Chicago morning producer
KellyT_60468@yahoo.com
 708-642-8518

•Greg Cole

Former WKQC/Saginaw, MI OM/PD
GCole27000@gmail.com
 916-502-4734

•Jonathan West

Former WKTI/Milwaukee afternoons
JonathanWestRadio@gmail.com
 320-774-9300

•Marc Lavik (aka Dave Marcus)

Former on-air talent
ZimaGuy@gmail.com
 401-467-6737

•Cory Mikhals

Former KIZN/Boise morning co-host
CoryProductions@icloud.com

•"Big" John Horton

Former KFSA/Ft. Smith, AR afternoons
BigJohn@TheBigJohnShow.com

•Kris Richards

Former WKJO/Smithfield, NC afternoons
FireCop947@yahoo.com

•AJ McCloud

Former WWFF/Huntsville, AL
 APD/afternoons
AJ.McCloud@charter.net
 256-503-2301

•Mac Daniels

Former KPLX & KSCS/Dallas PD
MacDaniels@me.com

•Brittany Tully

Former WYNK/Baton Rouge PD
BrLynn718@gmail.com

•Steve Knoll

Former KMAG/Ft. Smith, AR PD/
 on-air talent
SteveKnoll@cox.net

•Bill Hickok

Former KBMR/Bismark, ND mornings
BillHickok1950@gmail.com

•Amy Nic

Former WAMZ/Louisville afternoons
AmyNicRadioChick@gmail.com

•Ron "Keyes" Stevens

Former WQRB/Eau Claire, WI
 afternoon host
RonStvns@yahoo.com

•Scott Davidson

Former WHOF-HD2/Canton, OH PD/
 on-air host
Davidson1023@gmail.com

•Trace Hamilton

Former WEBG/Chicago night host
TheTraceHamilton@gmail.com

•Daryl Thomas Ledyard

Former WBBS/Syracuse on-air talent
DarylLedyard@gmail.com

•Ryan McCall

Former WGLR/Platteville, WI
 MD/afternoons
RyanMcCall@yahoo.com

•David Dean

Former KXDD/Yakima, WA afternoons
DaviDean5@gmail.com

•Kasper

Former WUSN/Chicago afternoons
KasperShow@gmail.com and www.KasperShow.com

•Brian "Wookie" Kostek

Former WDSY/Pittsburgh
 APD/MD/afternoons
BKostek24@gmail.com

•Jake Byron

Former KUPL/Portland mornings
JakeByronMedia@gmail.com

•Brent Jones

Former Capitol Dir./
 Midwest Promotion
DBJones615@gmail.com
 615-482-5653

•Kim Brixton

Former WNWN/Battle Creek, MI
 mornings/middays
KimBrixton@gmail.com

•Mark McKay

Former Riser House Dir./
 Southeast Promotion
MMcKay973@gmail.com

•Tim Taylor

Former KWJJ/Portland afternoons
Tim.Taylor1@comcast.net

•Amber Rainey

Former KSON/San Diego middays
AmberRaineyOnAir@gmail.com

•Tami Rumpfelt

Former WPAW/Greensboro
 afternoons
TamiRumpfelt@gmail.com

•Mike Allan

Former WNSH/New York nights
MikeAllanRadio@gmail.com

•Darlene Evans

Former WKIS/Miami middays
DarleneInc@yahoo.com

•Nathan Cruise

Former In2une Dir./Regional
 Promotion
NCruise27@gmail.com
 615-496-6356

•Mark "Skid" Lavin

Former WOTW/Orlando Dir./
 Production & On-Air
MarkLavin@yahoo.com
 407-619-5346

•"Wes McShay" Gardipe

Former Appaloosa Dir./Western
 Region Programming
WesGardipe@gmail.com
 307-899-0007

•Nicholas Nixon

Former KFRG/Riverside personality
Kn3ick@outlook.com
 909-754-3031

•Kerry Wolfe

Former WMIL/Milwaukee SVPP & PD
KerryLWolfe@hotmail.com
 414-788-3764

•Chase Daniels

Former WRWD/Poughkeepsie, NY
 PD/afternoons
ChaseDaniels106@gmail.com

•Keith Abrams

Former iHeartMedia/Cleveland OM
KeithAbrams961@gmail.com

•Mike McKay

Former WQRB/Eau Claire, WI Brand
 Mgr./mornings
McKProd@charter.net

•Jimmy Elliott

Former WOVK/Wheeling, WV WPP/
 PD/MD/mornings
JimmyElliottSchlosser@gmail.com

•Steve Powers

Former iHeartMedia/Mobile, AL SVPP
StevePowers961@yahoo.com

•Jim Dorman

Former iHeartMedia/Wichita SVPP &
 Country KZSN PD/middays
JimDorman2@aol.com

•Eddie Rupp

Former iHeartMedia/Sarasota, FL
 SVPP/OM & Country WACTQ middays
ER-1001@hotmail.com

•Mike Tyler

Former WCKT/Ft. Myers, FL
 PD/afternoons
RadioGuy.101@gmail.com

•Amy Lynn

Former WCKT/Ft. Myers, FL middays
AmyLynnRadio@gmail.com

•Bill "Stu" Stewart

Former KASH/Anchorage, AK PD/
 morning co-host
BStu1013@gmail.com

•Doug Kramer

Former KHLR/Little Rock, AR mornings
DougKramerLive@gmail.com

•Ashley King

Former KHLR/Little Rock, AR afternoons
AKingMarsh@gmail.com

•Jeremy "Otis" Maher

Former WUBL/Atlanta MD/afternoons
JeyMaher20@yahoo.com

•Jess Tyler

Former WOKQ/Portsmouth, NH
 Brand Mgr./MD/middays
JTylor1999@yahoo.com

•Jim Pearson

Former KDBL/Yakima, WA
 PD/mornings
JimsCoolEmail@gmail.com
 831-261-1822

•Crash Poteet

Former WPOR/Portland, ME Brand
 Mgr./afternoons
OKCCrash@gmail.com

•Aaron "Gator" Glass

Former WQNU/Louisville mornings
GatorGlass.53@gmail.com

•Tom Scott

Former Seven Mountains/Pennsylvania
 "Big Foot Country" afternoons
TomScottRadio@gmail.com

•Todd Elbrink

Former Cox/Houston DOS
TElbrink@icloud.com

•Matt Valley

Former KBRJ/Anchorage, AK Dir./
 Content & mornings
MattDotValley@gmail.com

•Kevin "Gravy" Canup

Former Summit/Knoxville OM
KCRadio815@gmail.com
 616-337-0067

•Carly Quinn

Former WGH/Norfolk morning co-host
NewEnglandClamChowder2021@yahoo.com
 757-617-8171

•Melissa "Mel" Hering

Former KORA/Bryan-College Station,
 TX MD/mornings
Mel.Hering@gmail.com

•Chuck Reeves

Former KTFW/Dallas & KTWF/Wichita
 Falls, TX PD/afternoons
ChuckReeves33@yahoo.com

•Chuck "DZL" Thompson

Former WKKT/Charlotte PD
DZLradio@gmail.com
 704-615-7095

•JC Coffey

Former Big Machine Dir./Midwest
 Promotion & Marketing
RadioJC83@gmail.com
 269-806-6865

•Jackie McKay

Former KSOP/Salt Lake City night
 host/Promotions Dir.
JackieMcKayRadio@gmail.com

•JD Greene

Former WPGP/Pittsburgh
 PD/afternoons
OConnell1631@yahoo.com
 412-613-2539

Spring 2021 Diary Scoreboard

Here are Spring 2021 (4/1-6/23) Nielsen Audio diary ratings results listed alphabetically by market. Ranks (in parentheses) are among subscribers. Of the 154 diary markets, 51 had Country stations ranking in first place, down from 54 in the Fall 2020 survey. WILQ/Williamsport,

PA once again had the largest share of any Country station in the nation. Non-subscribing stations in published markets are Fall 2020 Diary Scoreboard excluded. Legend: A "+" indicates a Classic Country outlet; a "t" indicates a tie, and a "*" indicates a station was not a subscriber during that survey.

Spring Diary Top Ten

SHARE



FA	SP		
1	1	WILQ/Williamsport, PA	18.3
4	2	WTHI/Terre Haute, IN	17.9
6	3	WLLR/Quad Cities, IA-IL	16.0
7	4	WPIG/Olean, NY	15.7
5	5	WIMT/Lima, OH	15.3
9	6	WFRG, Utica, NY	14.3
2	7	WKKW/Morgantown, WV	14.2
3	8	WUSQ/Winchester, VA	14.0
--	9	WKSJ/Asheville, NC	13.4
10	10	WAXX/Eau Claire, WI	12.8

Station/City	12+ FALL 2020 SHARE	FALL 2020 RANK	12+ SPRING 2021 SHARE	SPRING 2021 RANK	Station/City	12+ FALL 2020 SHARE	FALL 2020 RANK	12+ SPRING 2021 SHARE	SPRING 2021 RANK	Station/City	12+ FALL 2020 SHARE	FALL 2020 RANK	12+ SPRING 2021 SHARE	SPRING 2021 RANK
KEAN/Abilene, TX	6.8	3t	6.9	1t	WKPE/Cape Cod, MA	3.2	8t	*	*	WXFL/Florence, AL	11.4	2	9.0	2
KBCT/Abilene, TX	6.0	6	6.9	1t	KHAK/Cedar Rapids, IA	9.7	1	9.6	1	WEGX/Florence, SC	6.5	4t	5.8	4
KSLI-AM/Abilene, TX	0.8	11	0.7	11	KKSY/Cedar Rapids, IA	4.6	6t	3.7	8t	WWKT/Florence, SC	2.7	8t	2.1	12t
WOBB/Albany, GA	5.4	3	6.6	3	WKWS/Charleston, WV +	6.3	4	4.6	6	WFRE/Frederick, MD	8.1	1	11.1	1
WKAK/Albany, GA	3.4	6	2.0	7t	WKAZ/Charleston, WV	3.2	7	2.5	7	WWEG-HD3/Frederick, MD	0.5	14t	1.9	11t
KGNC/Amarillo, TX	7.4	2	6.7	2	KOLT/Cheyenne, WY	7.3	1t	6.3	2t	WAYZ/Frederick, MD	0.5	14t	1.4	13t
KATP/Amarillo, TX	5.9	3t	5.2	5t	KRAN/Cheyenne, WY +	6.1	4	6.3	2t	WGRX/Fredericksburg, VA	3.5	5	4.1	3t
KPUR/Amarillo, TX	1.2	12t	1.6	11	KXBG/Cheyenne, WY	1.2	12t	2.5	10t	WMZQ/Fredericksburg, VA (Washington)	0.9	18t	1.3	13
KARX/Amarillo, TX	1.2	12t	1.2	12t	KLEN/Cheyenne, WY	1.2	12t	*	*	WFLS/Fredericksburg, VA	7.7	1	7.3	1
KBRJ/Anchorage, AK	3.4	8t	4.6	6t	KHSL/Chico, CA	6.8	1	*	*	KUAD/Ft. Collins, CO	4.0	3	3.1	4t
KASH/Anchorage, AK	3.4	8t	2.6	10t	KALF/Chico, CA	3.7	5t	3.7	4	KXBG/Ft. Collins, CO	4.7	2	2.9	6t
WWWW/Ann Arbor, MI	5.9	2	4.5	4	KCLR/Columbia, MO	9.7	1	12.6	1	WAVW/Ft. Pierce, FL	3.4	2t	3.8	5
WNCY/Appleton, WI	9.6	1	9.1	2	KATJ/Columbia, MO	2.4	10t	2.2	10t	WIRK/Ft. Pierce, FL (W. Palm Beach)	2.5	6	3.0	7t
WGEE/Appleton, WI +	3.5	5t	3.4	7t	KBBM/Columbia, MO	2.4	10t	2.2	10t	KMAG/Ft. Smith, AR	7.3	1	7.2	1
WPKR/Appleton, WI	1.6	9	1.6	16t	WSTH/Columbus, GA	3.3	7	2.7	7t	KOMS/Ft. Smith, AR	5.9	3	5.4	3
WKSJ/Asheville, NC	10.0	1	13.4	1	WNHW/Concord, NH	4.2	4	5.0	3	WHWY/Ft. Walton Beach, FL	4.2	5t	4.8	4
WPUK/Atlantic City, NJ	7.3	1	6.8	1	WOKQ/Concord, NH	5.1	2t	2.1	8t	WDJR/Ft. Walton Beach, FL +	5.7	3	4.0	7
WKXC/Augusta, GA	6.5	4	4.3	8	WPKQ/Concord, NH	1.7	5t	1.2	12	WYZB/Ft. Walton Beach, FL	2.4	10t	2.2	9t
WLUB/Augusta, GA	4.3	6	4.1	9	KRYS/Corpus Christi, TX	7.9	3	8.1	2	WBTU/Ft. Wayne, IN	4.9	5	4.0	4
WEBB/Augusta, ME	6.4	3t	6.6	5	KAJE/Corpus Christi, TX	0.8	13t	1.7	10	WOGK/Gainesville, FL	6.6	3	*	*
WCTB/Augusta, ME +	6.4	3t	4.7	8	WDBY/Danbury, CT	1.7	7t	1.7	11t	WRUF/Gainesville, FL	3.1	7t	2.6	6t
WQCB/Bangor, ME	13.4	2	9.7	1t	WDAQ-HD3/Danbury, CT	2.3	6	1.7	11t	WPLL/Gainesville, FL +	0.7	15t	1.2	13t
WBFB/Bangor, ME	2.2	10t	3.4	9t	WWYZ/Danbury, CT (Hartford)	1.1	10t	1.1	15t	KYCK/Grand Forks, ND-MN	6.6	4t	6.8	5t
KYKR/Beaumont, TX	6.6	3	7.6	2	WWKA/Daytona Beach, FL (Orlando)	4.0	8t	4.2	6t	KSNR/Grand Forks, ND-MN	5.3	6t	6.8	5t
KAYD/Beaumont, TX	2.4	9	2.1	11	WKRO/Daytona Beach, FL	4.6	4t	1.5	16	KRNY/Grand Island, NE	8.6	1t	8.9	2t
KWTV/Beaumont, TX (Lake Charles)	1.8	11	1.8	12	WTVY/Dothan, AL	10.0	2	8.9	2	KRGI/Grand Island, NE	6.3	5	4.9	5
KTHT/Beaumont, TX (Houston)	3.3	8	3.6	9	WDJR/Dothan, AL +	7.5	4	7.3	4	WNCY/Green Bay, WI	10.3	2	9.4	2
WKNN/Biloxi, MS	4.5	5	4.1	4	KDKE/Duluth, MN +	9.9	2	5.2	5t	WGEE/Green Bay, WI +	2.8	11	5.5	5
WHWK/Binghamton, NY	9.5	1	12.5	1	KKCB/Duluth, MN	5.8	4t	5.8	3t	WAYZ/Hagerstown, MD	11.2	1	9.1	1
WBBI/Binghamton, NY	1.6	10t	2.9	8	KTCO/Duluth, MN	3.5	9t	4.0	9	WFRG/Hagerstown, MD	3.6	7	2.9	7
WINR/Binghamton, NY +	1.6	10t	1.0	11	WAXX/Eau Claire, WI	12.0	1	12.8	1	WKCY/Harrisonburg, VA	10.1	1t	10.3	1
KODY/Bismark, ND	8.2	3	7.6	3t	WQRB/Eau Claire, WI	7.3	5	5.4	6t	KQUS/Hot Springs, AR	10.7	1t	10.8	1
KBMR-AM/Bismark, ND	6.4	4t	5.7	6t	WATQ/Eau Claire, WI	6.0	7t	4.7	8	KSSN/Hot Springs, AR (Little Rock)	3.6	7t	4.8	3t
KUSB/Bismark, ND	6.4	4t	6.7	5	WCBF/Elmira, NY	2.9	6t	4.8	2t	KMJX/Hot Springs, AR + (Little Rock)	2.4	11t	2.4	11t
KKBO/Bismark, ND	4.5	7t	4.8	8t	WKQP/Elmira, NY	4.3	4	4.1	4	WNSH/Hudson Valley, NY (New York)	1.3	20t	1.2	21
WBWN/Bloomington, IL	6.3	2	5.9	2	WNBTV/Elmira, NY	0.7	11	0.7	10t	WTCR/Huntington, WV	10.3	2	7.9	3
WJBC/Bloomington, IL	0.9	6t	0.8	7t	WTFW/Erie, PA	6.8	4t	5.4	6	WDGG/Huntington, WV	7.6	3	8.3	2
KQBL/Boise, ID	6.9	2	6.0	1	WXTA/Erie, PA	4.5	9	3.6	8	WXBW/Huntington, WV +	4.0	5t	4.2	5t
KAWO/Boise, ID	2.4	15t	3.0	15t	KKNU/Eugene, OR	11.5	1	11.3	1	WOGY/Jackson, TN	7.5	3	7.6	3
KIZN/Boise, ID	2.6	13t	4.2	6t	KFLY/Eugene, OR	1.9	11t	1.9	13	WWYN/Jackson, TN	5.0	6t	5.1	5t
WBVR/Bowling Green, KY	6.9	1	6.5	1	KEED-AM/Eugene, OR +	1.6	12	2.9	9	WPWT/Johnson City, TN	4.0	3t	4.8	4
WLYE/Bowling Green, KY +	3.2	5	3.0	6	WKDQ/Evansville, IN	8.2	3	7.6	3	KIXQ/Joplin, MO	10.6	1	11.5	1
WHHT/Bowling Green, KY	1.4	8t	1.3	9t	WLYD/Evansville, IN	2.5	9	4.3	5	WBCI/Kalamazoo, MI	5.9	2	6.7	3
WYNN/Brunswick, GA	7.8	2	6.5	3	WBKR/Evansville, IN	1.4	10	1.8	9t	WNWN/Kalamazoo, MI	1.6	14t	3.0	9
WOKO/Burlington, VT	11.8	1	12.2	1	KVOX/Fargo, ND	5.0	5t	5.2	7	WACO/Killeen, TX (Waco)	6.6	1t	7.9	1
KAGG/Bryan-College Station, TX	3.9	5	4.3	5t	KBBV/Fargo, ND	5.0	5t	6.7	4t	KUSJ/Killeen, TX	5.6	2	6.5	3
KNDE-HD2/Bryan-College Station, TX +	1.9	9t	3.7	7	KKIX/Fayetteville, AR	8.1	1t	8.8	2	WCOW/La Crosse, WI	9.2	1	10.1	1
KVMK/Bryan-College Station, TX	0.6	12t	1.9	10t	KAMO/Fayetteville, AR +	4.7	8t	5.8	4	WQCC/La Crosse, WI	4.3	3t	4.1	3
WQMX/Canton, OH	4.8	5t	4.9	5	KRXD/Fayetteville, AR	2.5	10t	1.9	13t	KMDL/Lafayette, LA	7.8	2t	7.4	3
WQXK/Canton, OH	5.1	4	3.7	7	WKML/Fayetteville, NC	8.7	2	9.5	2	KPCZ/Lafayette, LA +	1.6	12t	2.3	11t
WCTK/Cape Cod, MA (Providence)	2.3	12t	2.7	9t	WFBE/Flint, MI	4.5	5	5.7	3	KXKC/Lafayette, LA	3.0	11t	2.8	9

Spring 2021 Diary Scoreboard (continued)

Station/City	12+ FALL 2020 SHARE	FALL 2020 RANK	12+ SPRING 2021 SHARE	SPRING 2021 RANK	Station/City	12+ FALL 2020 SHARE	FALL 2020 RANK	12+ SPRING 2021 SHARE	SPRING 2021 RANK	Station/City	12+ FALL 2020 SHARE	FALL 2020 RANK	12+ SPRING 2021 SHARE	SPRING 2021 RANK
KOGM/Lafayette, LA +	0.9	15t	1.1	15	KMRK/Odessa-Midland, TX	2.6	9t	2.3	12	KWTO/Springfield, MO +	3.1	8t	5.5	4
KYKZ/Lake Charles, LA	8.1	1	6.4	3	WPIC/Olean, NY	14.5	1	15.7	1	WWJO/St. Cloud, MN	8.5	1	7.6	1
KNGT/Lake Charles, LA	6.4	3	7.1	2	WYRK/Olean, NY (Buffalo)	1.7	5	2.2	4	KZPK/St. Cloud, MN	5.9	2	6.4	3
KQLK/Lake Charles, LA +	4.1	5t	3.8	6t	WZKZ/Olean, NY	1.2	6t	1.1	8t	KDDG/St. Cloud, MN +	2.6	9t	2.8	8t
WPCV/Lakeland, FL	6.7	1	9.4	1	KHAY/Oxnard, CA	5.7	1	4.9	4	WVAL-AM/St. Cloud, MN +	1.5	12t	2.0	12t
WFUS/Lakeland, FL	2.5	7t	1.9	8t	KPLM/Palm Springs, CA	2.4	9t	6.1	4	KATM/Stockton, CA	7.4	2	6.2	2
WIOV/Lancaster, PA	6.6	2t	7.7	2	KDES/Palm Springs, CA	1.6	15t	2.7	10t	WRBG/Sunbury, PA	5.6	2	6.3	2
WTLT/Lansing, MI	9.3	1	10.7	1	WPAP/Panama City, FL	11.4	1	8.5	1t	WILQ/Sunbury, PA	6.7	1	5.7	3
WWDK/Lansing, MI +	3.2	8	3.4	8	WDJR/Panama City, FL (Dothan) +	3.4	5	3.5	5	WCFT/Sunbury, PA	4.4	4	3.4	10t
KRRG/Laredo, TX	8.1	4	7.9	3t	WNUS/Parkersburg, WV-OH	7.6	2	8.9	1	WNSH/Sussex, NJ (New York)	3.4	3t	3.2	5t
KGRT/Las Cruces, NM	8.5	2	7.0	2	WXBW/Pensacola, FL	3.1	9	2.3	12	WCTO/Sussex, NJ (Allentown)	1.7	11t	1.6	9t
KXPZ/Las Cruces, NM	5.1	6	5.8	3	WXCL/Peoria, IL	8.7	1t	5.1	7	WTNT/Tallahassee, FL	3.7	7t	5.8	4
WXXK/Lebanon, NH-VT	4.5	3t	5.0	3	WFYR/Peoria, IL	2.3	10t	2.7	10t	WVOF/Tallahassee, FL	5.6	6	3.6	7
WJEN/Lebanon, NH-VT	3.2	6	2.5	8t	WTHH/Portland, ME	4.7	4	4.6	4	WTHH/Terre Haute, IN	16.3	1	17.9	1
WXLN/Lebanon, NH-VT	2.5	7t	3.8	4t	WOKQ/Portland, ME	0.2	13t	0.5	15t	WVIG/Terre Haute, IN +	4.4	6	7.3	4t
WCNL/Lebanon, NH-VT +	1.3	13t	1.3	13t	WOKQ/Portsmouth, NH	6.0	2	5.3	2	KTPK/Topeka, KS +	5.8	3	11.6	1
WWFY/Lebanon, NH-VT	1.3	13t	1.3	13t	WKLK/Portsmouth, NH (Boston)	2.3	13	1.7	16	WIBW/Topeka, KS	7.6	2	8.5	2
WBUL/Lexington, KY	8.3	1	7.4	2	WTBU/Portsmouth, NH	1.0	20	1.4	17t	KTOP/Topeka, KS	2.9	9	2.1	12t
WLXO/Lexington, KY +	1.8	16	3.3	11	WRWD/Poughkeepsie, NY	2.7	7t	3.0	7t	WMKC/Traverse City, MI	6.4	1	10.6	1
WWLV/Lexington, KY	2.7	15	2.0	14t	WCZY/Poughkeepsie, NY	2.3	9	3.0	7t	WTCM/Traverse City, MI	*	*	9.4	3
WIMT/Lima, OH	15.8	1	15.3	1	KCCY/Pueblo, CO	6.2	2	4.9	6t	WFFN/Tuscaloosa, AL	4.4	4t	4.3	5
KFGE/Lincoln, NE	7.3	2t	5.8	4t	KATC/Pueblo, CO	4.8	6	3.5	8t	WTTX/Tuscaloosa, AL	5.0	3	5.0	4
KZKX/Lincoln, NE	6.4	4	7.0	1	WLLR/Quad Cities, IA-IL	15.5	1	16.0	1	WZZK/Tuscaloosa, AL (Birmingham)	2.5	8t	2.5	9t
KLLL/Lubbock, TX	6.1	3	7.8	1	KZZI/Rapid City, SD	4.6	4	4.1	4	WDXB/Tuscaloosa, AL (Birmingham)	1.3	15t	1.9	13t
KOBR/Lubbock, TX	2.8	9t	3.0	10t	WIOV/Reading, PA	4.7	3t	4.3	3t	KNUE/Tyler, TX	6.5	2t	7.1	3t
KFTU-HD2/Lubbock, TX +	1.2	15	1.5	15	KALF/Reading, PA	0.8	6	1.5	6t	KYKX/Tyler, TX	3.5	10	4.0	8
WDEN/Macon, GA	7.2	3	7.9	3	KBUL/Reno, NV	7.2	2	4.2	7	KKUS/Tyler, TX +	2.9	11	3.4	11
WIHB/Macon, GA	2.6	8	2.1	8t	KOLC/Reno, NV	4.4	8	3.1	8	WFRG/Utica, NY	12.1	1	14.3	1
WIHB-AM/Macon, GA +	1.4	10	0.8	11	KLCA-HD3/Reno, NV	0.9	19	1.2	17	WBUG/Utica, NY	2.6	7	1.9	8t
WOKQ/Manchester, NH	5.3	2	5.1	2	KCMY-AM/Reno, NV +	1.1	18	1.0	18t	WBBS/Utica, NY (Syracuse)	1.5	9t	1.2	11t
WKLK/Manchester, NH (Boston)	2.1	10t	2.8	3t	WSLC/Roanoke, VA	8.9	2	7.4	1	WKAA/Valdosta, GA	4.8	4t	3.2	5t
WNHW/Manchester, NH	1.1	14t	*	*	WYDY/Roanoke, VA	3.2	9	4.2	7	KATJ/Victor Valley, CA	5.0	3	4.2	4t
KTEX/McAllen, TX	8.8	2	11.0	1	KWWK/Rochester, MN	6.3	2	7.7	1	KSKS/Visalia, CA (Fresno)	2.5	8	2.9	7
WKAM/Melbourne, FL (Orlando)	5.2	4t	4.9	4	KMFY/Rochester, MN	4.9	4	5.6	2	KHGE/Visalia, CA (Fresno)	1.3	5t	1.6	13
WHRK/Melbourne, FL	4.4	8t	2.9	9t	WXXQ/Rockford, IL	5.5	3	6.8	2	WACO/Waco, TX	9.7	1	9.6	1
KATM/Modesto, CA	6.2	2	9.3	1	WRTB/Rockford, IL	4.3	6	3.7	7	KRMX/Waco, TX	2.9	6t	3.0	7
KOSO/Modesto, CA	0.7	12t	0.8	12t	WCEN/Saginaw, MI	5.4	3t	5.5	4	KOEL/Waterloo, IA	10.2	2	*	*
WMKM/Monmouth	2.2	5	4.1	2	KSKG/Salina, KS	9.0	1	8.6	1	KPTY-AM/Waterloo, IA +	1.6	9	3.1	5
WLWI/Montgomery, AL	4.5	5	4.2	7t	KQLA/Salina, KS	1.7	7t	2.3	6t	WEFX/Watertown, NY	*	*	2.3	4t
WBAM/Montgomery, AL	3.6	6	4.8	6	KXBZ/Salina, KS	1.7	7t	1.1	10t	WLFX/Watertown, NY	*	*	1.2	6t
WQKS-HD4/Montgomery, AL +	2.4	11t	2.9	11	WWFG/Salisbury, MD	6.2	1t	6.5	1	WDEZ/Wausau, WI	9.3	1	8.9	2
WWFY/Montpelier, VT	6.1	2	7.9	3	WUSX/Salisbury, MD	1.8	12t	1.8	13t	WYTE/Wausau, WI	4.7	6	5.4	6
WKXH/Montpelier, VT	1.7	9t	1.8	8	KDCD/San Angelo, TX	4.4	4t	4.6	6	WOVK/Wheeling, WV	11.5	1	9.3	2t
WUJZ/Montpelier, VT	3.5	4t	4.4	4t	KGKI/San Angelo, TX	4.4	4t	3.4	7t	WLYI/Wheeling, WV +	5.7	7t	6.2	7
WPKQ/Montpelier, VT	1.7	9t	0.9	12t	KBTP/San Angelo, TX +	7.8	2	8.0	2	WBGI/Wheeling, WV	5.7	7t	5.4	8
WKKW/Morgantown, WV	17.5	1	14.2	1	KKCN/San Angelo, TX	2.2	6t	2.3	9	WLIE-AM/Wheeling, WV +	1.6	10t	0.8	10t
WPDX/Morgantown, WV +	4.9	5	2.8	7	KKJG/San Luis Obispo, CA	10.5	1	11.3	1	KLUR/Wichita Falls, TX	8.3	3t	8.3	2t
WNSH/Morristown, NJ (New York)	3.4	8	3.4	5	KSNH/Santa Maria, CA	4.8	4	6.3	2t	KWFS/Wichita Falls, TX	5.0	8	4.6	8
WMDH/Muncie, IN	8.4	2	7.3	2t	WCTQ/Sarasota, FL	2.8	7t	2.7	8	KXXN/Wichita Falls, TX +	5.8	5t	6.5	6
WBKQ/Muncie, IN	2.8	5t	2.4	7t	WFUS/Sarasota, FL	2.8	7t	3.1	6	KOLH/Wichita Falls, TX	0.8	10	0.9	12
WMUS/Muskegon, MI	9.2	2	9.7	2	WQYK/Sarasota, FL	1.6	18	1.6	12t	WILQ/Williamsport, PA	17.7	1	18.3	1
WBCT/Muskegon, MI (Grand Rapids)	3.9	5t	2.8	8t	WJCL/Savannah, GA	2.8	11t	3.6	8	WBYL/Williamsport, PA	4.4	5	3.5	7
WLAW/Muskegon, MI	1.3	6t	*	*	WUBB/Savannah, GA	3.1	9t	3.9	7	WXCW/Wilmington, DE	2.8	8	4.4	5
WGTR/Myrtle Beach, SC	7.2	1t	7.0	1	WBFM/Sheboygan, WI	10.7	1	7.2	3t	WDSO/Wilmington, DE	2.0	11t	2.0	12
WLFF/Myrtle Beach, SC	1.5	12t	1.7	11t	KXKS/Shreveport, LA	4.4	6	4.6	7	WUSQ/Winchester, VA	16.6	1	14.0	1
WEGG/Myrtle Beach, SC	1.0	14t	1.7	11t	KRMD/Shreveport, LA	4.9	4	3.9	9	WKLK/Worcester, MA (Boston)	5.3	3	4.0	4t
WWYZ/New Haven, CT (Hartford)	3.5	6t	4.0	6t	KSUX/Sioux City, IA	9.6	1t	10.3	2	WORC/Worcester, MA	2.2	5	1.5	12
WCTY/New London, CT	7.9	1	8.2	2	KKYY/Sioux City, IA	4.8	7t	3.7	9	WGTW/York, PA	10.8	1	9.8	1
WWYZ/New London, CT (Hartford)	1.4	6t	2.3	9	KTWB/Sioux Falls, SD	11.0	1	12.1	1	WQXK/Youngstown, OH	6.9	3	8.3	2
WRWD/Newburgh, NY	2.3	6t	2.3	5t	KXRB-FM/Sioux Falls, SD	3.9	9	3.6	9	WBBG/Youngstown, OH	2.5	8t	3.7	7t
WCZX/Newburgh, NY	1.0	15t	1.0	12t	KIKN/Sioux Falls, SD	2.2	10	2.7	10					
KNFM/Odessa-Midland, TX	4.5	4	3.5	9t	KTTS/Springfield, MO	8.6	1t	11.6	1					
KHKX/Odessa-Midland, TX	6.3	2	6.6	3	KSWF/Springfield, MO	4.3	5t	3.3	13t					

July 2021 PPM Scoreboard

After last month's slight dip, the July 2021 PPM Book (6/24-7/21) saw Country rebound 1.8% (354.6 to 360.9) to reach its largest total share since last September. Compared to last July, overall share is off 5.5%. Overall cume was off by less than half a percent from last month, down 69,700 to 25,626,300. That is down 2.5% compared to last July's 26,282,500. After two months of leading the format, WNSH/

New York yields the cume title back to KPLX/Dallas, while WCOL/Columbus has the largest share for the seventh consecutive month. Legend: A "+" indicates a Classic Country outlet; a "^" designates co-owned Country stations in the metro; a "t" indicates a tie; and a "*" indicates a station that is a recent subscriber for which ratings were not currently available. Ranks are among subscribers.

July PPM Top 10

SHARE

1	1	WCOL/Columbus	8.9
8t	2t	KNCL/Sacramento	8.0
2t	2t	WCTK/Providence	8.0
4t	4	WGAR/Cleveland	7.8
4t	5	WVYZ/Hartford	7.7
6t	6	WSM/Nashville	7.4
--	7	WUBE/Cincinnati	7.0
8t	8	WPOC/Baltimore	6.8
6t	9	KYGO/Denver	6.7
--	10	WKKT/Charlotte	6.6

Station/City	Jun 6+ Share	Rank	Jul 6+ Share	Rank	Jun Cume	Jul Cume	Station/City	Jun 6+ Share	Rank	Jul 6+ Share	Rank	Jun Cume	Jul Cume
WKHX/Atlanta	2.3	14t	2.9	12t	359,700	335,100	WMIL/Milwaukee	6.3	5	6.1	6	340,900	319,000
WUBL/Atlanta	3.0	12	3.5	10t	390,300	444,100	KEEY/Minneapolis	5.4	5t	6.0	5	464,000	477,500
KASE/Austin ^	3.3	11t	3.4	9	200,100	194,700	KMNB/Minneapolis	2.2	15	2.1	15	325,800	322,400
KVET/Austin ^	5.1	4	5.8	3	236,400	236,400	KLCI/Minneapolis+	2.0	16	1.8	17	121,400	108,500
KOKE/Austin	1.0	22	0.8	22	69,600	61,800	WKDF/Nashville ^	3.5	11	3.2	11t	146,500	174,600
WPOC/Baltimore	6.4	2	6.8	2	315,700	328,900	WSIX/Nashville	7.8	2	6.1	6	234,500	226,300
WKLB/Boston	5.7	5t	6.1	2t	510,100	556,200	WSM-FM/Nashville ^	7.1	3	7.4	3	221,100	196,200
WBWL/Boston	2.1	18	2.3	15	290,400	319,000	WNSH/Nassau (New York)	0.9	26t	1.0	25t	91,500	76,100
WCTK/Boston (Providence)	1.9	19	1.7	21	155,500	158,500	WNSH/New York	2.2	18	2.5	15t	907,200	798,300
WKKT/Charlotte	5.4	3	6.6	2	367,400	382,900	WGH/Norfolk	4.9	7	6.1	3	171,400	192,100
WSOC/Charlotte	5.1	5	5.9	3t	386,200	377,600	WUSH/Norfolk	4.7	8	4.6	7t	164,600	174,300
WUSN/Chicago	2.8	13t	2.8	13t	834,800	779,200	WWKA/Orlando	4.1	9	4.1	9t	164,500	162,500
WUBE/Cincinnati ^	6.0	3	7.0	3	291,800	314,800	WXTU/Philadelphia	5.4	4	4.7	7	552,000	544,100
WNKN/Cincinnati+	3.3	13	2.1	14	135,100	113,000	KMLE/Phoenix	3.3	9t	3.5	10t	484,400	497,200
WNNF/Cincinnati	2.0	16	2.0	15t	151,000	171,300	KNIX/Phoenix	6.0	2	5.7	3	521,900	572,100
WYGY/Cincinnati ^	1.4	18	1.6	18	91,300	108,400	WDSY/Pittsburgh	5.1	5t	5.4	5	262,800	272,300
WGAR/Cleveland	7.6	5	7.8	5	357,800	342,200	WPGH/Pittsburgh	3.4	11	3.5	11	190,000	193,600
WCOL/Columbus, OH	9.3	1	8.9	1	288,700	282,500	WLYI/Pittsburgh ^ +	1.9	14	1.5	15t	81,900	74,700
KPLX/Dallas ^	4.0	6t	4.0	7	824,100	898,500	WOGG/Pittsburgh ^	0.9	20	1.0	20	67,600	54,500
KSCS/Dallas ^	4.4	4t	4.1	6	637,500	654,100	WOGI/Pittsburgh ^	1.0	17t	1.5	15t	84,000	109,500
KYGO/Denver	7.1	1	6.7	1	408,800	457,700	KUPL/Portland	5.1	4	3.9	9t	293,300	227,400
KWBL/Denver	2.6	13	2.5	13	259,300	290,200	KWJJ/Portland	3.5	12t	4.4	7t	275,400	293,200
WDRQ/Detroit	2.4	16	2.2	16t	335,700	306,200	WCTK/Providence	7.8	2	8.0	1	272,300	270,500
WYCD/Detroit	5.1	6	4.5	9	562,700	521,900	WNCB/Raleigh	3.0	13	2.9	13	119,300	136,300
WPAW/Greensboro	5.8	6	5.0	6	207,500	175,200	WQDR/Raleigh	5.0	7	5.6	6t	206,000	224,900
WTQR/Greensboro	4.8	8	4.8	7t	187,900	181,000	KFRG/Riverside	4.8	4	4.2	5	262,600	222,500
WVYZ/Hartford	7.6	2	7.7	2	171,800	172,100	KNCL/Sacramento	6.4	4	8.0	3	330,900	316,200
KILT/Houston	3.3	13	3.3	13t	668,200	720,800	KEGA/Salt Lake City	0.9	24t	0.8	24	103,200	90,600
KKBQ/Houston ^	3.9	11	4.0	9t	775,700	768,300	KSOP/Salt Lake City	6.4	4	6.3	6	208,800	217,000
KTHH/Houston ^ +	2.0	21	2.0	21	364,900	342,600	KUBL/Salt Lake City	2.8	15	2.7	16	206,200	185,900
WFMS/Indianapolis	5.8	5	5.8	6t	224,700	238,700	KAJA/San Antonio	4.5	9t	5.0	6	386,400	386,400
WLHK/Indianapolis	3.6	12	4.0	10	175,500	187,500	KCYX/San Antonio ^	5.1	5t	5.9	4	481,500	463,700
WGNE/Jacksonville	4.6	8	5.2	7t	184,600	181,900	KKYX-AM/San Antonio ^ +	1.5	19t	1.5	17t	104,400	104,000
WQIK/Jacksonville	5.5	7	6.4	5t	183,000	206,400	KSON/San Diego	4.8	7	4.7	6t	284,600	269,600
KBEO/Kansas City ^	3.9	10	4.3	9	220,000	214,500	KRTY/San Jose	5.4	2t	4.5	4	154,600	134,300
KFKF/Kansas City ^	5.1	6	4.8	5t	261,500	235,000	KKWF/Seattle	3.2	12t	3.1	14t	363,100	351,200
WDAF/Kansas City	3.4	11t	4.4	8	199,000	223,500	KNUC/Seattle	2.3	19	2.7	16t	260,700	293,900
KCYE/Las Vegas	2.5	17	3.1	13	143,000	179,500	KSD/St. Louis	4.2	9	5.2	9	382,200	403,000
KWNR/Las Vegas	4.1	6t	4.2	7	178,200	188,800	WIL/St. Louis	3.7	11t	4.0	11t	313,800	342,500
KKGO/Los Angeles	2.5	15	2.2	15t	709,500	622,900	WFUS/Tampa	4.1	7t	3.3	13	330,500	282,700
WGKX/Memphis	3.2	11	3.3	10	120,100	118,500	WQYK/Tampa	3.4	10t	3.1	14	283,000	235,800
WLFP/Memphis	2.5	13	2.4	13	81,800	75,600	WMZO/Washington	4.3	10	3.4	12	408,700	383,000
WKIS/Miami	2.4	14t	2.3	15t	263,300	276,600	WIRK/West Palm Beach	3.5	7t	3.2	9	95,800	103,700
WNSH/Middlesex (New York)	4.4	7	4.8	6	146,000	158,400							
WKMK/Middlesex (Monmouth)	0.6	27	0.7	25t	44,500	39,200							

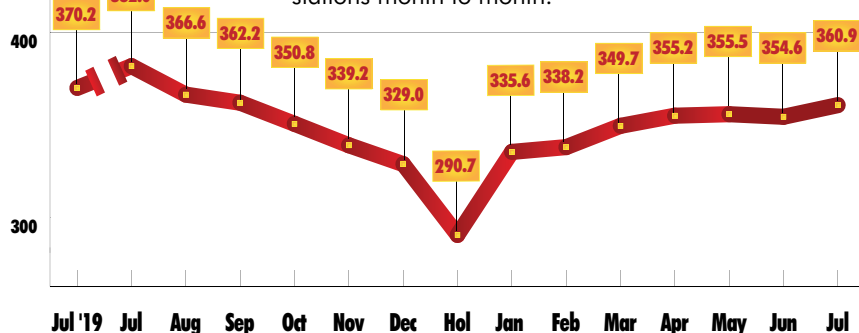
July PPM Top 10

CUME

3	1	KPLX/Dallas	898,500
1	2	WNSH/New York	798,300
2	3	WUSN/Chicago	779,200
4	4	KKBQ/Houston	768,300
6	5	KILT/Houston	720,800
7	6	KSCS/Dallas	654,100
5	7	KKGO/Los Angeles	622,900
108		KNIX/Phoenix	572,100
--	9	WKLB/Boston	556,200
9	10	WXTU/Philadelphia	544,100

Format-Wide PPM Ratings

Aggregate share for Nielsen Audio subscribing stations month to month.



2	1	DAN + SHAY ✓ Glad You Exist (Warner/WAR)	29967	1939	8261	595	36.108	1.509	159	0
3	2	JUSTIN MOORE /We Didn't Have Much (Valory)	28175	1900	7781	482	35.858	1.706	160	0
1	3	CHASE RICE f/ FGL /Drinkin' Beer... (Dack Janiels/BBR/BMLGR)	27453	-4302	7353	-1323	35.17	-5.7	159	0
4	4	LUKE BRYAN /Waves (Capitol)	27431	1293	7490	336	36.432	1.715	159	0
7	5	LAINIE WILSON /Things A Man Oughta Know (Broken Bow)	22737	1107	6306	368	26.289	0.762	159	0
6	6	THOMAS RHETT /Country Again (Valory)	22355	659	6214	176	29.934	1.823	160	0
8	7	SCOTTY MCCREERY /You Time (Triple Tigers) ✓	20650	2371	5784	721	24.68	1.758	160	0
10	8	J. RODGERS f/ L. COMBS /Cold Beer... (River House/Columbia) ✓	19704	2051	5452	581	23.256	2.119	160	0
11	9	ELVIE SHANE /My Boy (Wheelhouse)	16874	943	4760	202	20.277	1.699	158	1
13	10	LEE BRICE /Memory I Don't Mess With (Curb)	16576	1361	4408	280	20.523	2.138	160	0
12	11	OLD DOMINION /I Was On A Boat That Day (Arista)	15540	174	4268	46	17.941	-0.096	160	0
14	12	CARLY PEARCE /Next Girl (Big Machine)	14568	81	4115	50	16.55	-0.142	160	0
15	13	RYAN HURD w/ MAREN MORRIS /Chasing After You (Arista)	13469	908	3718	290	13.808	1.271	157	0
16	14	KENNY CHESNEY /Knowing You (Blue Chair/Warner/WEA)	13330	932	3755	223	15.748	1.032	158	0
17	15	LADY A /Like A Lady (BMLGR)	13257	1091	3567	291	14.372	1.22	160	0
18	16	J. ALLEN & B. PAISLEY /Freedom Was A Highway (Stoney Creek)	12914	794	3549	215	14.689	0.813	159	0
19	17	JON PARDI /Tequila Little Time (Capitol)	12683	1601	3516	473	13.99	1.56	156	1
22	18	J. ALDEAN & C UNDERWOOD /If I... (Macon Music/Broken Bow/Capitol) ✓	11549	2391	3114	703	14.492	2.781	158	9
23	19	LUKE COMBS /Cold As You (River House/Columbia) ✓	11233	2113	2988	559	13.53	2.143	148	9
20	20	MICHAEL RAY /Whiskey And Rain (Warner/WEA)	11103	1015	2972	308	11.279	0.885	155	2
21	21	PRISCILLA BLOCK /Just About Over You (InDent/Mercury)	10546	728	2807	229	10.308	0.124	156	1
9	22	KEITH URBAN w/ P!NK /One Too Many (RCA/Capitol)	9393	-8813	2727	-2436	11.624	-8.303	157	0
25	23	ZAC BROWN BAND /Same Boat (Home Grown/Warner/WAR)	9249	769	2554	212	10.607	0.964	147	3
24	24	CALLISTA CLARK /It's 'Cause I Am (Big Machine)	9120	549	2544	129	9.791	0.834	154	0
26	25	RUSSELL DICKERSON /Home Sweet (Triple Tigers)	8675	436	2274	112	9.139	1.054	150	1

©2021 Country Aircheck™ All rights reserved. Sign up at countryaircheck.com • Send news to news@countryaircheck.com ✓=Top 5 Point Gainers

RAY FULCHER

Girl in it





OVER 30 MILLION ARTIST STREAMS
OVER 3 BILLION SONGWRITER STREAMS

ADD DATE MONDAY 8.23.21

BLACK RIVER RECORDS

LW	TW	Artist/Title (Label)	Total Points	+/- Points	Total Plays	+/- Plays	Audience	+/- Aud	Stations	ADDS
27	26	D. LYNCH f/M. PORTER/Thinking 'Bout You (Broken Bow)	8573	607	2204	136	8.995	0.933	150	2
28	27	CHRIS STAPLETON/You Should Probably Leave (Mercury)	7953	342	2159	75	8.623	0.298	148	3
29	28	K. BALLERINI f/K. CHESNEY/Half Of My Hometown (Black River)	7266	630	2108	195	7.354	0.52	151	0
30	29	PARKER MCCOLLUM/To Be Loved By You (MCA)	6790	435	1739	103	7.404	0.83	146	2
34	30	WALKER HAYES/Fancy Like (Monument)	6552	1407	1810	361	6.908	1.612	110	12
37	31	JORDAN DAVIS/Buy Dirt f/Luke Bryan (MCA)	5456	1005	1426	276	4.556	0.508	134	11
32	32	HARDY/Give Heaven Some Hell (Big Loud)	5375	23	1533	27	4.65	0.011	135	1
35	33	ERIC CHURCH/Heart On Fire (EMI Nashville)	5086	605	1413	172	4.88	0.405	118	8
38	34	ELLE KING & MIRANDA LAMBERT/Drunk ... (RCA/Columbia)	4416	160	1247	55	4.2	0.248	86	6
39	35	GARTH BROOKS/That's What Cowboys Do (Pearl)	4394	480	1175	124	3.651	0.52	117	5
36	36	MATT STELL/That Ain't Me No More (Records/Arista)	4309	-167	1193	-42	4.04	-0.322	125	2
40	37	LAUREN ALAINA w/JON PARDI/Getting Over Him (Mercury)	3907	32	1109	9	3.207	-0.068	126	1
42	38	RILEY GREEN/If It Wasn't For Trucks (BMLGR)	3506	119	1078	51	2.04	-0.101	114	2
41	39	BRETT YOUNG/Not Yet (BMLGR)	3409	-27	934	-1	3.324	0.23	100	2
43	40	CAITLYN SMITH f/OLD DOMINION/I Can't (Monument)	3302	65	997	26	1.958	-0.025	104	1
44	41	TOBY KEITH/Old School (Show Dog)	3059	-19	965	16	1.553	-0.191	121	5
Debut	42	DAN + SHAY/Steal My Love (Warner/WAR)	2787	2787	762	762	3.852	3.852	72	72
46	43	BROTHERS OSBORNE/I'm Not For Everyone (EMI Nashville)	2739	39	794	16	1.907	0.056	89	0
45	44	LARRY FLEET/Where I Find God (Big Loud)	2680	-53	815	1	2.053	-0.01	81	1
48	45	DARIUS RUCKER/My Masterpiece (Capitol)	2346	42	674	9	2.34	0.001	95	0
49	46	D. BENTLEY f/BRELAND & HARDY/Beers... (Atlantic/Big Loud/Capitol)	2286	65	601	3	2.233	-0.121	75	7
50	47	CHRIS BANDI/Would Have Loved Her (Records)	2181	14	680	-5	1.241	-0.005	84	1
47	48	BRANTLEY GILBERT/The Worst Country Song Of... (Valory)	2128	-392	529	-100	3.333	-0.112	91	0
Debut	49	TIM MCGRAW/7500 OBO (Big Machine)	2080	808	572	226	1.739	0.886	72	13
Re-Enter	50	NELLY & FLORIDA GEORGIA LINE/Lil Bit (BMLGR/RECORDS/Columbia)	2074	-64	637	-14	1.866	0	54	0

©2021 Country Aircheck™ All rights reserved. Sign up at countryaircheck.com • Send news to news@countryaircheck.com ✓=Top 5 Point Gainers

CONGRATULATIONS
**DAN SMYERS, SHAY MOONEY,
 JORDAN REYNOLDS, TAYLA PARX,
 & RYAN LEWIS**

glad you exist

#1 SONG

DAN + SHAY

THANK YOU
 WARNER MUSIC NASHVILLE & SANDBOX ENTERTAINMENT

Country Aircheck Add Leaders

	Adds
DAN + SHAY/Steal My Love (Warner/WAR)	72
MITCHELL TENPENNY/Truth About You (River House/Columbia)	16
JAKE OWEN/Best Thing Since Backroads (Big Loud)	13
TIM MCGRAW/7500 OBO (Big Machine)	13
WALKER HAYES/Fancy Like (Monument)	12
JORDAN DAVIS f/LUKE BRYAN/Buy Dirt (MCA)	11
ALAN JACKSON/You'll Always Be My Baby (EMI Nashville)	9
J. ALDEAN & C. UNDERWOOD/If I... (Macon Music/BBR/Capitol)	9
LUKE COMBS/Cold As You (River House/Columbia)	9

Country Aircheck Top Point Gainers

DAN + SHAY/Steal My Love (Warner/WAR)	2787 ✓
J. ALDEAN & C. UNDERWOOD/If I... (Macon Music/BBR/Capitol)	2391 ✓
SCOTTY MCCREERY/You Time (Triple Tigers)	2371 ✓
LUKE COMBS/Cold As You (River House/Columbia Nash)	2113 ✓
J. RODGERS f/L. COMBS/Cold Beer... (River House/Columbia)	2051 ✓
DAN + SHAY/Glad You Exist (Warner/WAR)	1939
JUSTIN MOORE/We Didn't Have Much (Valory)	1900
JON PARDI/Tequila Little Time (Capito)	1601
WALKER HAYES/Fancy Like (Monument)	1407
LEE BRICE/Memory I Don't Mess With (Curb)	1361

Country Aircheck Top Spin Gainers

DAN + SHAY/Steal My Love (Warner/WAR)	762
SCOTTY MCCREERY/You Time (Triple Tigers)	721
J. ALDEAN & C. UNDERWOOD/If I... (Macon Music/BBR/Capitol)	703
DAN + SHAY/Glad You Exist (Warner/WAR)	595
J. RODGERS f/L. COMBS/Cold Beer... (River House/Columbia)	581
LUKE COMBS/Cold As You (River House/Columbia Nash)	559
JUSTIN MOORE/We Didn't Have Much (Valory)	482
JON PARDI/Tequila Little Time (Capito)	473
LAINIEY WILSON/Things A Man Oughta Know (Broken Bow)	368
WALKER HAYES/Fancy Like (Monument)	361

Activator Top Point Gainers

J. ALDEAN & C. UNDERWOOD/If I... (Macon Music/BBR/Capitol)	1669 ✓
SCOTTY MCCREERY/You Time (Triple Tigers)	1086 ✓
J. ALLEN & B. PAISLEY/Freedom... (Stoney Creek)	939 ✓
LUKE COMBS/Cold As You (River House/Columbia)	906 ✓
J. RODGERS f/L. COMBS/Cold... (River House/Columbia)	901 ✓
JORDAN DAVIS f/LUKE BRYAN/Buy Dirt (MCA)	849
MICHAEL RAY/Whiskey And Rain (Warner/WEA)	787
RYAN HURD w/MAREN MORRIS/Chasing After You (Arista)	764
TIM MCGRAW/7500 OBO (Big Machine)	646
PRISCILLA BLOCK/Just About Over You (InDent/Mercury)	639

Activator Top Spin Gainers

J. ALDEAN & C. UNDERWOOD/If I... (Macon Music/BBR/Capitol)	322
SCOTTY MCCREERY/You Time (Triple Tigers)	203
LUKE COMBS/Cold As You (River House/Columbia)	181
J. RODGERS f/L. COMBS/Cold... (River House/Columbia)	174
J. ALLEN & B. PAISLEY/Freedom Was... (Stoney Creek)	171
RYAN HURD w/MAREN MORRIS/Chasing After You (Arista)	152
JORDAN DAVIS f/LUKE BRYAN/Buy Dirt (MCA)	146
MICHAEL RAY/Whiskey And Rain (Warner/WEA)	131
TIM MCGRAW/7500 OBO (Big Machine)	125
PRISCILLA BLOCK/Just About Over You (InDent/Mercury)	122

Country Aircheck Top Recurrents

	Points
CHRIS YOUNG & KANE BROWN/Famous Friends (RCA)	23944
COLE SWINDELL/Single Saturday Night (Warner/WMN)	21449
LUKE COMBS/Forever After All (River House/Columbia)	21280
DIERKS BENTLEY/Gone (Capitol Nashville)	14334
PARMALEE f/BLANCO BROWN/Just The Way (Stoney Creek)	12086
LEE BRICE/One Of Them Girls (Curb)	11485
THOMAS RHETT/What's Your Country Song (Valory)	11171
JASON ALDEAN/Blame It On You (Macon Music/Broken Bow)	10162
BRETT YOUNG/Lady (BMLGR)	10103
LUKE BRYAN/Down To One (Capito)	9181

©2021 Country Aircheck™ All rights reserved. Sign up at countryaircheck.com • Send news to news@countryaircheck.com ✓=Top 5 Point Gainers

From SuiteRadio.net and McLendon New Media

FANTASY PARK
*"The Greatest Labor Day Concert
 That Never Was!"*

2 Hours/Inventory Free

rowdy@suiteradio.net

COUNTRY AIRCHECK ACTIVITY

DARIUS RUCKER/My Masterpiece (Capitol)

Moves 48-45*

2346 points, 674 spins; No adds

D. BENTLEY f/BRELAND & HARDY/Beers... (Atlantic/Big Loud/Capitol)

Moves 49-46*

2286 points, 601 spins

7 adds: **KKBQ*, KSCS*, KWNR, WDRM, WFUS, WIL, WXCX**

CHRIS BANDI/Would Have Loved Her (Quartz Hill)

Moves 50-47*

2181 points, 680 spins

1 add: **KKIX**

BRANTLEY GILBERT f/TOBY KEITH & HARDY/The Worst... (Valory)

Moves 47-48

2128 points, 529 spins; No adds

TIM MCGRAW/7500 OBO (Big Machine)

Debut 49*

2080 points, 572 spins

13 adds, including: **KCYE, KKBQ, KKGQ, WAVW, WCKT, WDRQ*, WGH, WKSJ, WUSJ, WYCT**

NELLY & FLORIDA GEORGIA LINE/Lil Bit (Columbia/Records/BMLGR)

Re-entry 50

2074 points, 637 spins; No adds

ADD DATES

Send yours to adds@countryaircheck.com

AUGUST 23

FRANK RAY/Country'd Look Good On You (Stoney Creek)

RAY FULCHER/Girl In It (Black River)

AUGUST 30

MIDLAND/Sunrise Tells The Story (Big Machine)

MORGAN EVANS/Love Is Real (Warner/WEA)

SEPTEMBER 7

None Listed

CHECK OUT

AUGUST 20

WANDA JACKSON *Encore* (Big Machine/Blackheart)

For her 32nd and final project, Jackson teamed with fellow Rock & Roll Hall of Famers Joan Jett and Kenny Laguna, Elle King, Angaleena Presley and Candi Carpenter.



MARTINA MCBRIDE *Greatest Hits: The RCA Years* (RCA)

The vinyl collection of 24 songs spans McBride's catalog of recordings with RCA, including "Independence Day," "Concrete Angel," "This One's For The Girls" and "A Broken Wing."



SAM WILLIAMS *Glasshouse Children* (UMGN)

Williams recorded his debut album primarily in Nashville with Jaren Johnston with contributions from songwriters including Dan Auerbach, Sean McConnell, Justin Parker and Johnston and collaborations with Dolly Parton and Keith Urban.



CONNIE SMITH *The Cry Of The Heart* (Fat Possum)

Smith's first album in a decade and third collaboration with producer/husband Marty Stuart includes opener "A Million and One," Smith and Stuart-penned "Here Comes My Baby Back Again" and "Spare Me No Truth Tonight" and the 72nd Dallas Frazier-written song Smith has recorded, "I Don't Believe Me Anymore."



RUNAWAY JUNE *Backstory* (Wheelhouse)

Dann Huff produced the first two of the trio's three-track project ("Forgot About That" and "Down The Middle), and Mark Trussell helmed the closer ("T-Shirt).



AUGUST 27

TRACE ADKINS *The Way I Wanna Go* (—)

Adkins 25th anniversary album and 13th studio set features 25 new songs and collaborations with artists including Luke Bryan, Pitbull, Melissa Etheridge, Keb' Mo', Stevie Wonder, Blake Shelton and Snoop Dogg.



©2021 Country Aircheck™ — All rights reserved. Sign up free at www.countryaircheck.com. Send news to news@countryaircheck.com



TUES AUG 24 8PM

Ascend
AMPHITHEATER

LIVE ON STAGE
LEE BRICE
BRETT ELDREDGE
MICKEY GUYTON
SAM HUNT
OLD DOMINION + SPECIAL GUESTS
TENILLE TOWNES
TRISHA YEARWOOD
+ MANY MORE

#ACMPARTY

TICKETS ON-SALE NOW

[ticketmaster®](https://www.ticketmaster.com)

LW	TW	Artist/Title (Label)	Points	+/- Points	Plays	+/- Plays	Stations	ADDS
2	1	LUKE BRYAN Waves (Capitol)	10471	240	2054	68	47	0
4	2	DAN + SHAY /Glad You Exist (Warner/WAR)	10236	282	2095	71	47	0
3	3	JUSTIN MOORE /We Didn't Have Much (Valory)	10129	-67	2043	-32	47	0
5	4	THOMAS RHETT /Country Again (Valory)	9430	178	1849	45	48	0
1	5	CHASE RICE f/FGL /Drinkin' Beer. Talkin' God. Amen. (Dack Janiels/BBR/BMLGR)	9125	-2076	1865	-409	47	0
6	6	LAINIE WILSON /Things A Man Oughta Know (Broken Bow)	8718	398	1790	91	47	0
8	7	JAMESON RODGERS f/LUKE COMBS /Cold Beer... (River House/Columbia)	8534	901	1646	174	47	0
10	8	SCOTTY MCCREERY /You Time (Triple Tigers) ✓	8307	1086	1609	203	47	0
9	9	ELVIE SHANE /My Boy (Wheelhouse)	7700	362	1563	80	47	0
12	10	LEE BRICE /Memory I Don't Mess With (Curb)	6737	15	1366	4	49	0
13	11	KENNY CHESNEY /Knowing You (Blue Chair/Warner/WEA)	6608	25	1276	1	47	0
14	12	OLD DOMINION /I Was On A Boat That Day (Arista)	6550	42	1240	7	46	0
15	13	JON PARDI /Tequila Little Time (Capitol)	6416	465	1223	96	48	0
21	14	J. ALDEAN & C. UNDERWOOD /If I... (Macon Music/Broken Bow/Capitol) ✓	5756	1669	1090	322	48	4
18	15	RYAN HURD w/MAREN MORRIS /Chasing After You (Arista)	5565	764	1103	152	48	1
19	16	LUKE COMBS /Cold As You (River House/Columbia)	5392	906	1000	181	47	3
16	17	CARLY PEARCE /Next Girl (Big Machine)	5386	343	1105	75	45	0
20	18	JIMMIE ALLEN & BRAD PAISLEY /Freedom Was A Highway (Stoney Creek) ✓	5275	939	978	171	47	2
17	19	LADY A /Like A Lady (BMLGR)	5174	218	1017	43	48	0
11	20	KEITH URBAN w/PINK /One Too Many (RCA/Capitol)	4273	-2777	878	-570	42	0
25	21	MICHAEL RAY /Whiskey And Rain (Warner/WEA)	4032	787	761	131	43	1
24	22	ZAC BROWN BAND /Same Boat (Home Grown/Warner/WAR)	3760	498	715	82	46	1
23	23	CHRIS STAPLETON /You Should Probably Leave (Mercury)	3743	406	748	65	46	0
26	24	PRISCILLA BLOCK /Just About Over You (InDent/Mercury)	3583	639	785	122	45	2
27	25	ERIC CHURCH /Heart On Fire (EMI Nashville)	3312	403	573	66	39	0
29	26	PARKER MCCOLLUM /To Be Loved By You (MCA)	2948	202	533	28	41	0
28	27	CALLISTA CLARK /It's 'Cause I Am (Big Machine)	2817	33	541	7	45	1
31	28	WALKER HAYES /Fancy Like (Monument)	2699	523	484	102	43	3
34	29	JORDAN DAVIS f/LUKE BRYAN /Buy Dirt (MCA)	2658	849	455	146	42	6
30	30	KELSEA BALLERINI f/KENNY CHESNEY /Half Of My Hometown (Black River)	2570	43	494	2	44	1

©2021 Country Aircheck™ All rights reserved. Sign up at countryaircheck.com • Send news to news@countryaircheck.com ✓=Top 5 Point Gainers

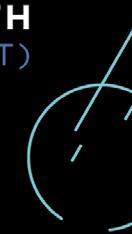
THE GREATEST FAMILY REUNION IN COUNTRY MUSIC!

CRS '22

FEBRUARY 23-25 | NASHVILLE

EARLY BIRD REGISTRATION

OPENS AUG. 17TH
10AM (CT)



LW	TW	Artist/Title (Label)	Points	+/-	Points	Plays	+/-	Plays	Stations	Adds
32	31	DUSTIN LYNCH f/MACKENZIE PORTER /Thinking 'Bout You (Broken Bow)	2399		518	502		99	45	7
33	32	GARTH BROOKS /That's What Cowboys Do (Pearl)	2012		149	426		33	39	4
35	33	RUSSELL DICKERSON /Home Sweet (Triple Tigers)	1851		95	388		26	39	1
36	34	HARDY /Give Heaven Some Hell (Big Loud)	1595		41	342		11	42	1
37	35	ELLE KING & MIRANDA LAMBERT /Drunk ... (RCA/Columbia)	1404		8	273		1	30	1
54	36	TIM MCGRAW /7500 OBO (Big Machine)	1185		646	215		125	14	6
38	37	LAUREN ALAINA w/JON PARDI /Getting Over Him (Mercury)	1131		34	250		9	32	1
39	38	JACKSON MICHELSON /Tip Jar (Curb/MCC)	984		46	192		7	22	0
40	39	TOBY KEITH /Old School (Show Dog)	964		47	200		8	31	0
41	40	BRETT YOUNG /Not Yet (BMLGR)	935		20	154		8	18	0
42	41	MATT STELL /That Ain't Me No More (Records/Arista)	839		-50	173		-16	30	0
44	42	RILEY GREEN /If It Wasn't For Trucks (BMLGR)	831		112	183		26	21	0
43	43	MADDIE & TAE /Woman You Got (Mercury)	783		-15	117		-12	13	0
Re-Enter	44	D. BENTLEY f/BRELAND & HARDY /Beers On Me (Atlantic/Big Loud/Capitol)	735		361	126		53	18	0
	47	RYAN GRIFFIN /Salt, Lime And Tequila (---)	700		40	70		4	1	0
	50	DILLON CARMICHAEL /Hot Beer (Riser House)	664		78	151		21	18	2
	48	SASHA SLOAN f/SAM HUNT /When It Was Over? (RCA)	660		0	66		0	1	0
	51	MORGAN WADE /Wilder Days (Ladylike/Thirty Tigers)	632		62	81		8	6	0
	46	DAN + SHAY /Good Things (Warner/WAR)	629		-41	64		-3	4	0
	52	BROTHERS OSBORNE /I'm Not For Everyone (EMI Nashville)	556		-12	127		-7	12	0
	55	LUCAS HOGE /Get Lost (Forge Entertainment)	532		9	112		3	7	0
	56	TIFFANY WOYS f/JORDAN FLETCHER /I Don't (Tiffany Woys)	526		34	108		6	8	0
	53	DARIUS RUCKER /My Masterpiece (Capitol)	496		-61	111		-8	22	0
	49	TRAVIS DENNING /ABBY (Mercury)	484		-170	95		-22	10	0
	58	SMITH & WESLEY /Under It With You Tonight (Dream Walkin')	482		27	96		4	7	0
	57	CAITLYN SMITH f/OLD DOMINION /I Can't (Monument)	471		13	118		4	26	1
	59	DUSTIN LYNCH f/CHRIS LANE /Tequila On A Boat (Broken Bow)	460		20	46		2	1	0
Re-Enter	58	MITCHELL TENPENNY /To Us It Did (River House/Columbia)	450		50	45		5	1	0
Debut	59	LACI KAYE BOOTH /Treasure (BMLGR)	440		310	44		31	1	0
	60	ASHLEY BARRON /Pretend He's You (SSM)	436		-1	90		1	6	0

©2021 Country Aircheck™ All rights reserved. Sign up at countryaircheck.com • Send news to news@countryaircheck.com ✓=Top 5 Point Gainers



Give Monthly. Get This Shirt.

St. Jude supporter Reba McEntire

