

How to use an ISO file downloaded from C-MAP servers

Dear Customer

Thank you for downloading C-MAP ISO file from our servers.

Please follow a short tutorial below to start using C-MAP ISO disc images on your computer.

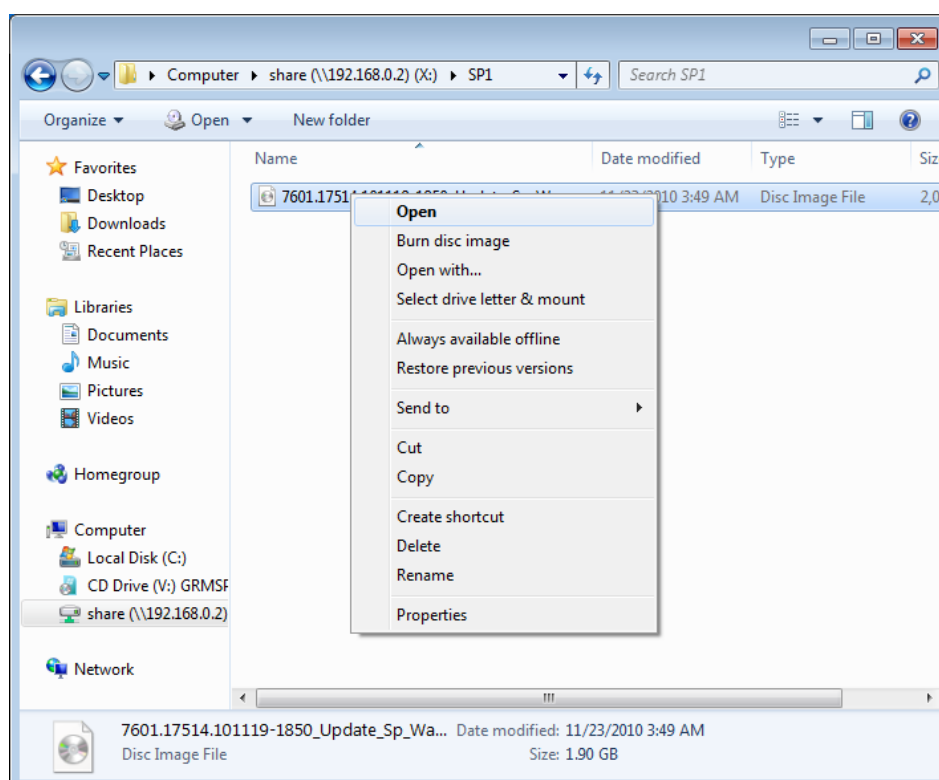
Should you have any questions please do not hesitate to contact us at eu-support@c-map.com

How to Mount an ISO File Using WinCDEmu¹

An ISO image is simply a "virtual copy" of an optical CD/DVD disc (...). To *mount* an ISO file means to access its contents as if it was recorded on a physical medium and then inserted in the optical drive. If you downloaded a software in the form of an ISO image and want to install it, mounting it will be faster and easier than recording it on an actual disc.

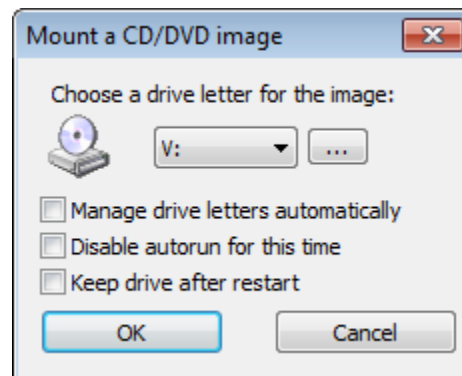
To mount an image you need to [install WinCDEmu](#). Then follow these steps:

1. Open the folder containing the image file:

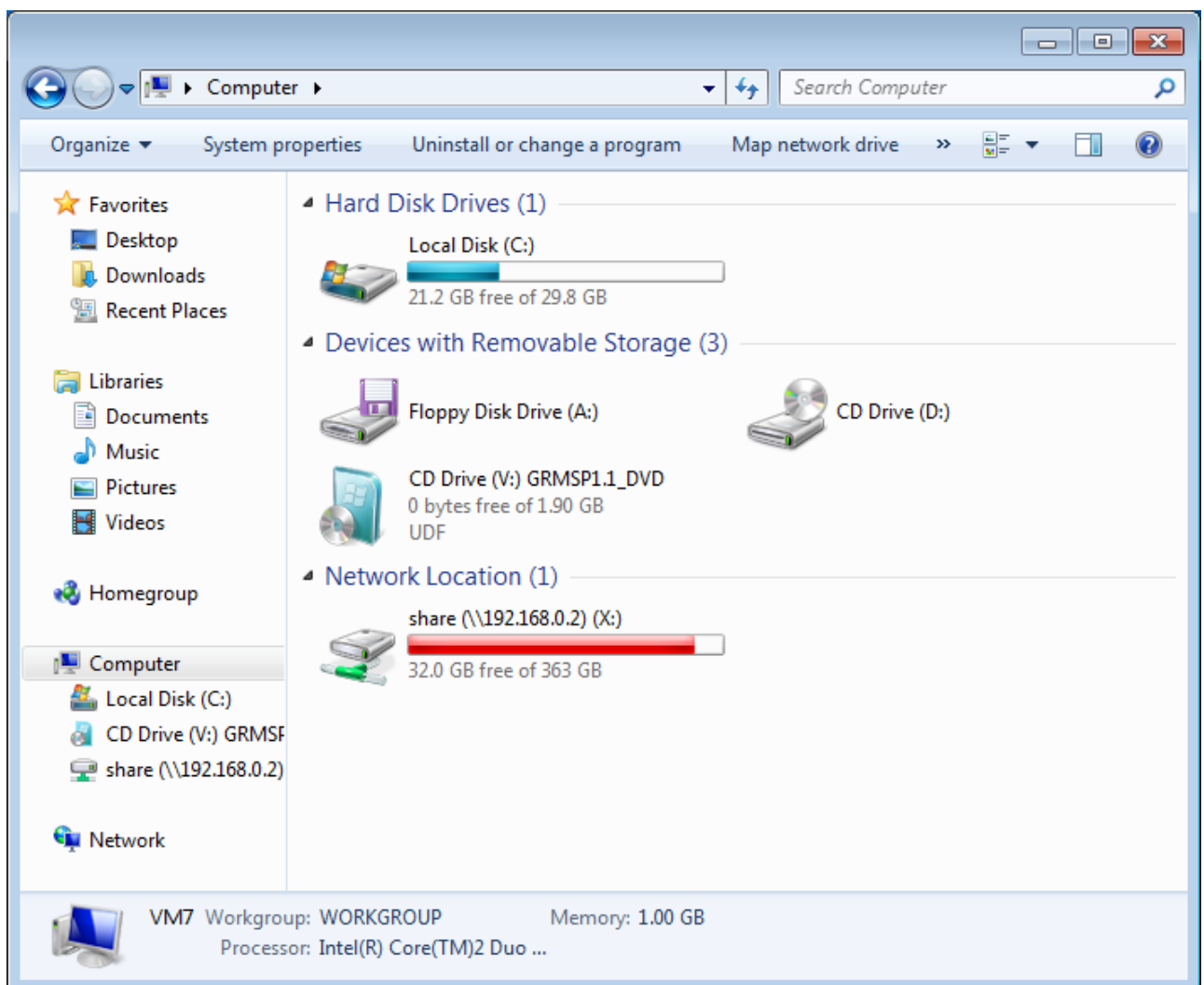


¹ <http://wincdemu.sysprogs.org/tutorials/mount/>

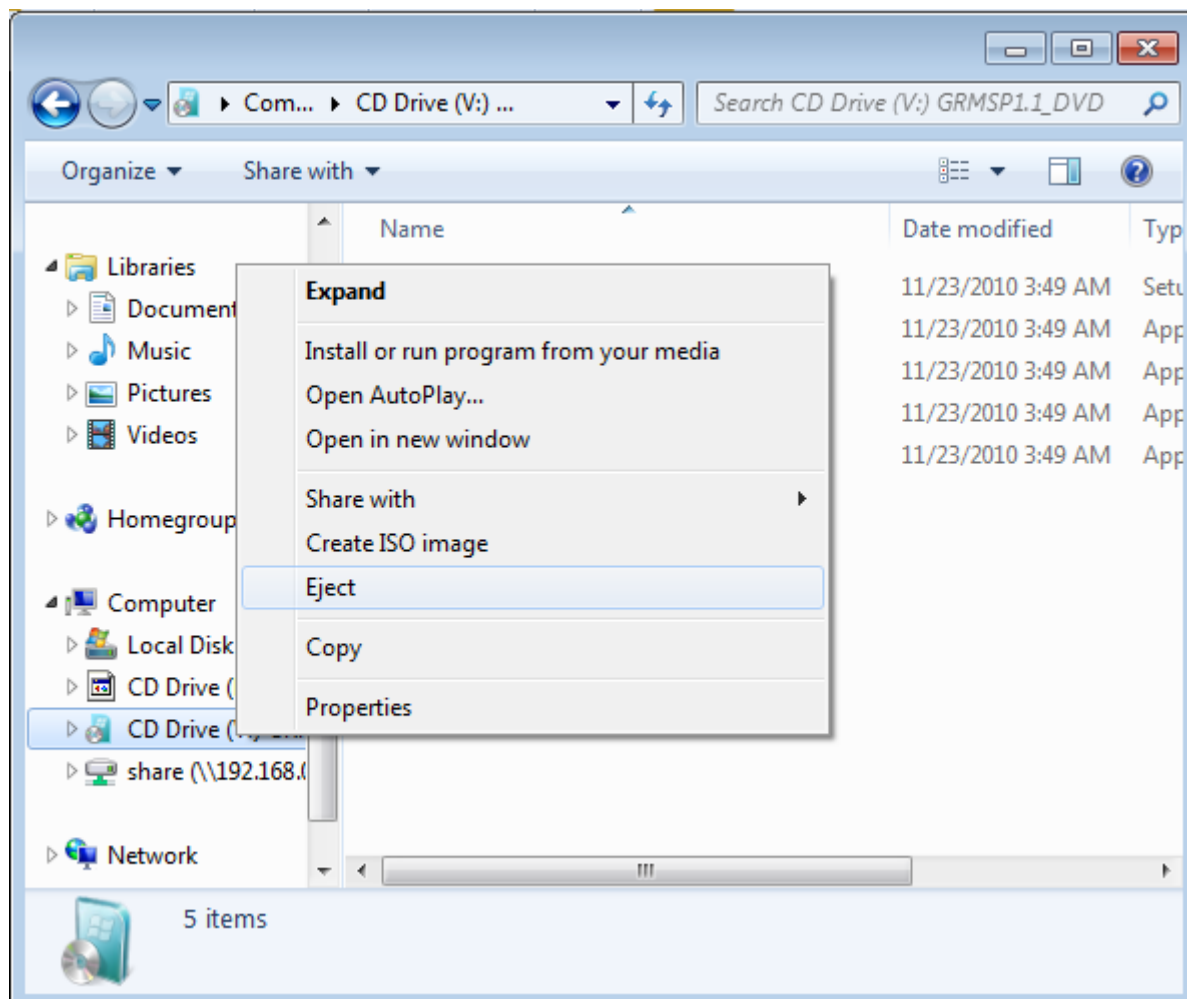
2. Double-click the image. Alternatively, you can right-click and select "Select drive letter & mount" from the context menu.



3. Click the OK button or press enter. If you don't want to see this dialog every time you mount an image, set the "Manage drive letters automatically" checkbox.
4. A new virtual drive will appear among all other drives in the "computer" folder:



5. You can use the virtual drive the same way as you would use a "real" optical disc - browse its contents, open files, start programs.
6. Once you are done with the image, right-click on the virtual drive and select "Eject":



7. You can alternatively unmount the image by double-clicking at the image file again.

| Country | Phone | E-Mail |
|--|----------------------------|--------------------------------|
| Italy, Spain, Portugal, France, Croatia, Turkey, Holland, Belgium, Greece and other European countries not listed below. | +39 0585 794 800 | EU-customersupport@c-map.com |
| UK & Ireland | | |
| Germany, Austria, Switzerland | | |
| Poland | | |
| Norway, Denmark, Iceland, Greenland | +47 51 46 47 99 | RU-lightmarine@c-map.com |
| Sweden, Finland | +39 0585 794 800 | |
| Africa & Middle East | +7 812 327 9894 | |
| Russia | +61 2 98 08 6200 | |
| Asia and Australia | Toll free: +1 800 424 2627 | apac-customersupport@c-map.com |
| The Americas and Caribbean | | US-customersupport@c-map.com |